

Ruthie Smith

Human Resources Director, Safety Coordinator



Ruthie Smith leads our HR department as well as helps facilitate the J.M. Wilkerson's Safety/Risk Management and Quality Control departments. She is responsible for ensuring JMW compliance with the Occupational Safety and Health Administration (OSHA) standards, as well as ensuring JMW's strict quality standards are met on every job. It is her responsibility to initiate any action required to achieve the above objectives and ensure all project activities are consistent with JMW's safety and quality policies and procedures. With the aid of our third party Safety consultant, Safety Consultants USA, Ruthie conducts project site inspections, job analysis, safety reports and safety training. One of her main objectives is to serve as a model for employees by reinforcing JMW's safety and quality goals and objectives and to prevent injury or loss of life.

Representative Experience

Juniper & 5th
Bethel Tower Apartments
664 Seminole
Studioplex Parking Deck
Studioplex Commercial Alley
Wheat Street Towers
Brookwood Square Apartments
Ponce City Market Parcel F Parking Deck
Juniper & 10th Renovation
Avondale Hills Apartments

Lockheed Martin On-Call Projects
Lake Blackshear Resort Renovations
1015 Boulevard
London Townhomes
Intrada Westside
Hightower Manor
400 Bishop
Arden Apartments
Oakland Cemetery Bell Tower & Visitor Center

Education

Miami Dade College
Business Management
1996-1998

Business History

J.M. Wilkerson Construction Co.,
Inc.
Human Resources Director 2006 --
Present

Payroll Admin 2001 - 2006

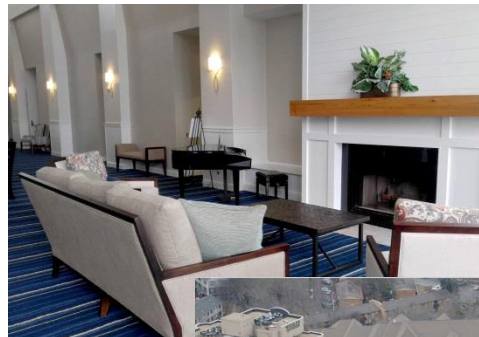
Urology Associates of Atlanta
Medical Receptionist/Translator
1998-2001

Affiliations

Phi Theta Kappa Honor Society
AGC Georgia

Training

OSHA 510 : Georgia Institute of
Technology
CPR / First Aid: HB Training



Building for Generations