

Studioplex Commercial Podium

Atlanta, Georgia



J.M Wilkerson Construction Co., Inc. was selected as the General Contractor for the construction of the Studioplex Commercial Podium in Atlanta, GA.

The project consisted of a 30,852 sq. ft. concrete commercial building that fronts the Beltline. The roof of the commercial space was designed as a podium for future townhomes.

The Studioplex commercial building and townhomes are considered two distinct buildings stacked vertically per IBC 510.2. The lower building shall be the commercial podium building (Building 1), separated from future townhomes (Building 2) by a horizontal 3-hour concrete assembly, located at the Studioplex parking level.

Client

StudioPlex LLC
1718 Peachtree Street #684
Atlanta, GA 30309
Josh Thigpen
404.874.5000

Architect/Engineer

TSW
1389 Peachtree St NE Suite 200
Atlanta, GA 30309
Jerry Spangler, AIA
404.873.6730

Start Date

April 2017

Completion Date

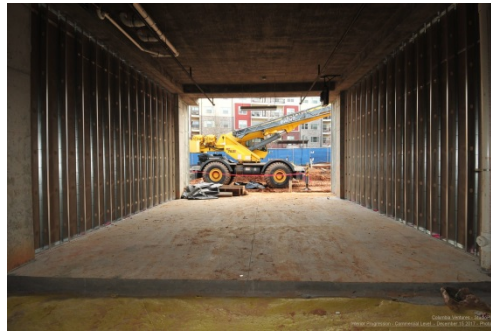
February 2018

Contract Amount

\$6,349,219

Awards

2018 AGC Build Georgia Awards First Place



Building for Generations