

The Leonard Apartments

Atlanta, Georgia



J.M. Wilkerson Construction Co., Inc. served as the general contractor for the 301 Memorial Drive Apartments, The Leonard, in Atlanta, GA.

The project included ground-up new construction of (1) apartment building with retail (3,300 sq. ft.), over below grade parking totaling approximately 99,430 gsf. and 85 apartment units -- 126 space parking area below grade.

The project also included full site work package including storm water detention structure, pervious asphalt paving, landscape/hardscape/site furnishings. Structure consists shallow foundations, foundation walls, SOG, and Post Tensioned Podium Slab over parking with 4 levels of wood framed residential above, including a small area of steel framing at retail. Exterior skin consisted of Nichi-Ha at retail level, cementitious siding/panels, and cast stone sills.

Window systems included aluminum storefront, aluminum residential window and sliding glass door systems, gated parking entry. Typical residential finishes, elevators, fire sprinkler, full MEP.

Client

307 Memorial Drive, LLC
950 Joseph E. Lowery Blvd.
Atlanta, GA 30318
Simon Tuohy
404.564.1250

Architect/Engineer

Archetype Design LLC
2300 Windy Ridge Pkwy SE, Suite 200S
Atlanta, GA 30339
Brooks Hall
770.936.0102

Start Date

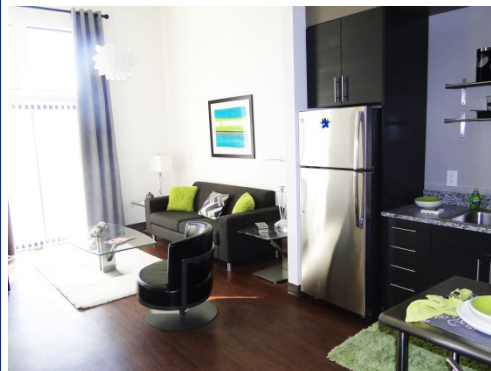
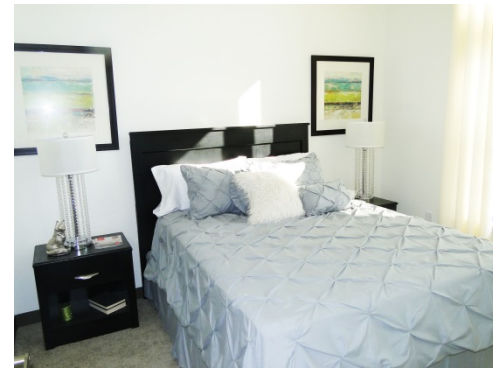
December 2013

Completion Date

February 2015

Contract Amount

\$7,213,740



Building for Generations