

# MARTA Bearing Pad Restoration/ Replacement

Atlanta, GA



J.M. Wilkerson Construction Co., Inc. was the contractor for the Metropolitan Atlanta Rapid Transit Authority (MARTA) for the renovation, maintenance and repair of the existing elevated transit line's bearing pads in Atlanta, GA.

This project required the elevation of the existing track structural supports and took place after hours and while active traffic was maintained. JMW's team, along with the Engineers of record, developed the lifting structure necessary to facilitate this project. Our teams worked with both MARTA and safety officials throughout the construction process, and completed the project ahead of schedule and within budget. JMW has worked with MARTA for over a decade in the Atlanta market.

## Client

Metropolitan Atlanta Rapid Transit Authority (MARTA)  
Francisco Rodriguez  
404.848.5343

## Engineer

Parsons Brinkeroff/Tudor  
404.237.2115

## Start Date

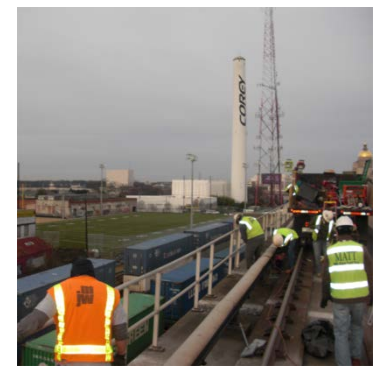
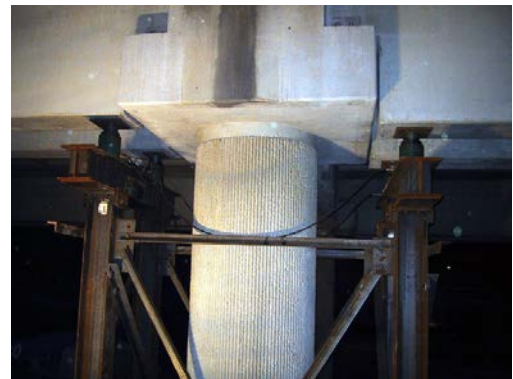
February 2007

## Completion Date

July 2007

## Contract Amount

\$385,000.00



**Building for Generations**