

Carroll County Jail Concrete Package

Carrollton, Georgia



J.M. Wilkerson Construction Co., Inc. was contracted to provide services for all cast-in-place concrete and concrete floor toppings for the 514 bed jail expansion for Carroll County, GA.

JMW furnished and installed resteel, concrete curbs, embeds, anchor bolts and expansion joints. JMW also formed, placed and finished the slab on grade, sump pits, topping slabs, concrete filled metal pans and base pads for the facility.



Client

Carroll County Board of Commissioners, Georgia

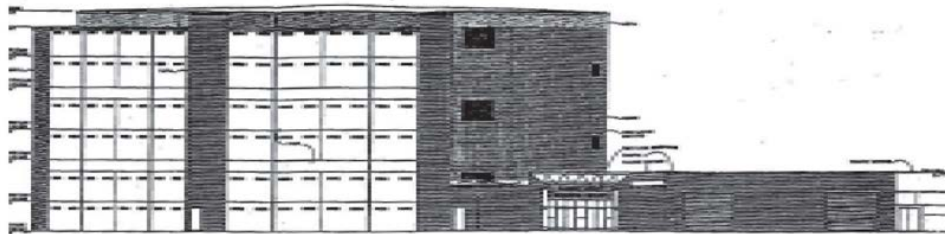
General Contractor

Turner Construction Company
3424 Peachtree Rd NE
Atlanta, GA 30326



Architect

Clemons, Rutherford & Associates
850.385.6153
2027 Thomasville Road
Tallahassee, FL 32308



Start Date

March 2000

Completion Date

September 2000

Contract Amount

\$749,209.00



Building for Generations