

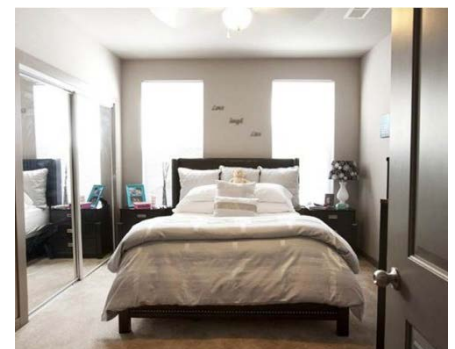
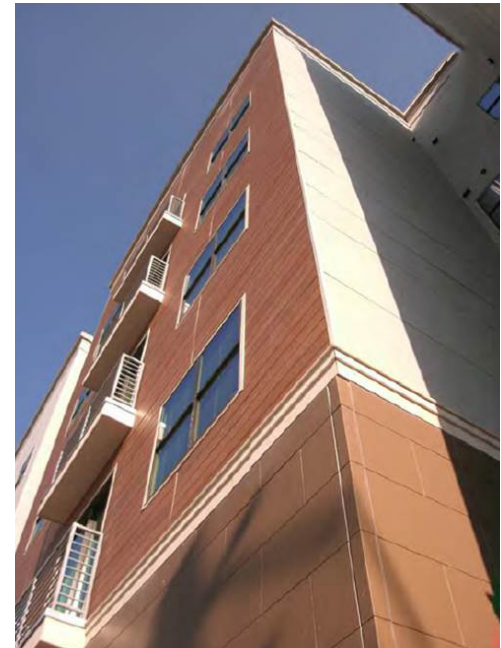
# Eclipse at 805 E. Broad Street

Athens, GA



J.M Wilkerson Construction Co., Inc. was selected as the general contractor for the luxury student housing complex Eclipse at 805 E. Broad Street in Athens, GA.

This new 51,636 sq. ft. Student Housing complex offers townhomes, flats, a fitness center, study lounge and 4,469 sq. ft. of street front retail. The project consisted of site work, detention structures, site paving, landscaping and a cast-in-place podium slab/parking deck. Building structures are wood frame construction consisting of 4 and 5 story structures clad in a mixture of brick, Hardi and stucco. Roofing consisted of TPO, metal and aluminum. The 128 sleeping units were leased prior to completion of construction and the project's schedule was shortened by 4 weeks. This project was completed on-time and with-in the owners budgets.



## Client

Chance Partners, LLC  
Bill Newell  
678.799.8960  
5256 Peachtree Road, Suite 135  
Atlanta, GA 30341

## Architect

Pucciano & English, Inc.  
Fred Pucciano  
770.457.0623  
3084 Mercer University Dr., STE 110  
Atlanta, GA 30341

## Start Date

January 2013

## Completion Date

August 2013

## Contract Amount

\$6.3 Million

**Building for Generations**