

Building for Generations Interior Construction Book



J.M.
WILKERSON
CONSTRUCTION

1734 Sands Place - Marietta, Georgia 30067 - www.jmwilkerson.com

Table of Contents

- 1 Firm Description
- 2 Professional References
- 3 Executive Resumes
- 4 Tenant Interiors and Retail Experience
- 5 Commercial / Public Sector Experience
- 6 Mixed-Use, Multi-Family Experience
- 7 Historic Renovation Experience
- 8 Choosing J.M. Wilkerson Construction

Our Mission

J.M. Wilkerson Construction's mission is to manage the construction process to ensure we give our clients more value than expected in Quality Assurance, Cost Control, Schedule, Performance, Working Relationship and Safety.

Jim Wilkerson
Owner/Chairman

- The JMW commitment extends beyond the construction process. We strive to earn your trust. Trust is the foundation to all successful working relationships.
- We perform our work with integrity. Our word is our commitment, and we never waiver from a commitment we make.
- We take ownership of a challenge. Challenges are inevitable, therefore, we admit our mistakes and take corrective action to ensure a positive end result.
- We work hard to exceed your expectations. This is our mission and our commitment to you.

J.M. Wilkerson Construction seeks long term involvement with our clients. Repeat business from satisfied clients is critical to our success. As partners in the construction process, we work together to reach common goals.

Firm Description

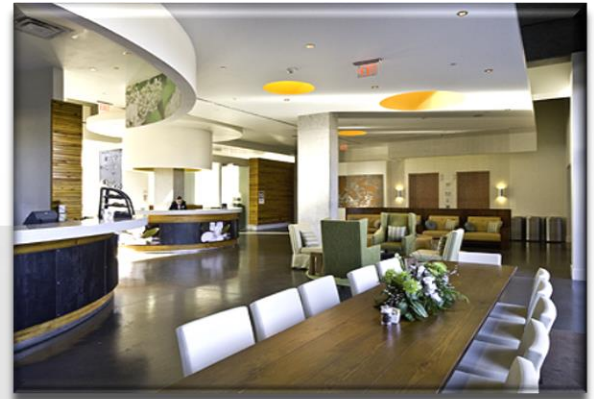


Building for Generations

Company Information

J.M. Wilkerson Construction Co., Inc.
1734 Sands Place - Marietta, Georgia 30067
Primary Contact - Mike Travis
Telephone: 770.953.2659 Fax: 770.933.9665
E-mail: mtravis@jmwilkerson.com
Website: www.jmwilkerson.com

- J.M. Wilkerson has been in Business for over 40 years
- Ownership - Corporation
- State of Residency / Incorporation - Georgia
- Office Location - Marietta, Georgia



Hotel Indigo - Athens, Georgia

Established in 1982 by Jim Wilkerson, J.M. Wilkerson Construction provided tenant interior renovations before expanding into industrial, office, institutional and concrete work. Today, JMW provides a wide array of services and has experience in many building types including, but not limited to, multi-family, historic renovation / adaptive reuse, industrial, tenant interiors, retail, religious, institutional, transportation, hospitality, concrete, rail and environmental projects. Our mixture of commercial and heavy/industrial projects is unique in the Southeastern markets.

The ability to provide services to both major market sectors, allows our teams to work on a wide array of projects. When it benefits a project, JMW can perform sub-contracting work in-house, providing a single source of responsibility and management. This frequently adds genuine value to our team and provides the client with greater protection. JMW's steady growth is based on the continued commitment of Mr. Wilkerson and his employees to provide personal attention and exceptional service to each client. Mr. Wilkerson takes pride in his organization and plays an active role in every project JMW undertakes. This family owned business works hard to maintain its quality and talented staff, many of whom have been with the company for over 40 years.

JMW's President and CEO is Brett Hawley. Brett joined the team in 1994, moving from Kansas City, MO to Georgia. His extensive knowledge in heavy construction complemented JMW's already broad experience base. Brett brought not only heavy civil and construction backgrounds, but commercial, hospitality and estimating knowledge, as well. Brett has helped the JMW team grow many new market sectors providing additional experience for future jobs.

JMW's Vice Presidents are Austin Pruitt, Michael Travis and Chris Griffeth. Austin Pruitt has worked with JMW in various roles and is now the Chief Estimator. Pruitt's knowledge of construction, estimating, and his ability to coordinate subcontractors makes him a valued member of the JMW Estimating Department. Austin works with both our Commercial Construction bids and Heavy Construction Departments and leads most estimating for JMW.

Mike Travis is the leader of the JMW Business Development department. He has been connected to the Design, Construction and Development industry for more than twenty-five years. As an architect graduating from the University of Oklahoma, he helped to execute and manage over a billion dollars in projects with teams like RTKL, Perkins Will and Smallwood Reynolds Stewart Stewart. His background in architecture, development and construction is critical to JMW's pre-construction efforts and new business pursuits.

As one of JMW's most accomplished project managers, Chris Griffeth has worked on all types of projects and has been with the JMW team for over fifteen years. Possessing many strengths in his management, Chris has become quite successful in the administration of HUD or federally funded as well as task order or on-call projects. He has successfully completed multiple projects for the Atlanta Housing Authority, City of Atlanta as well as Federal and Military agencies.

Building for Generations

Services

J. M. Wilkerson Construction offers a well-rounded array of construction services in the following areas:

Pre-Construction Services

Planning and Procurement
Design Review & Value Analysis
Budget and Cost Estimation
Value Engineering
Building Information Modeling (BIM)
LEED or Sustainable Construction Review
Design / Build
Scheduling

Construction Services

Project Management
Cost Control
CM @ Risk
General Construction
Sustainable Construction
Environmental Construction
Heavy /Civil / Concrete Construction
Site & Grading

We take great pride in giving our clients more value than they expect, and to that end, dedicate ourselves to constructing the highest quality product available. Just as significant, are the relationships we develop along the way.

We strive to establish a healthy, respectful relationship that will help us provide the highest level of service, which will continue in the years ahead. This philosophy has remained a consistent thread throughout JMW's 40 years in operation, allowing us to continue "Building for Generations".



J5 - New Luxury Housing



400 Bishop - New Construction



Hotel Indigo in Athens, GA - LEED Gold



MARTA Grout Pockets - Heavy Construction

Building for Generations

Green Building Experience

The philosophy of sustainability has become a major focus to many owners. This philosophy has also been embraced by both design and construction professionals across the country. With this new emphasis to provide more efficient buildings and practice more sustainable construction, the development of new operating procedures has become essential. The teams at J.M. Wilkerson Construction have been responsible for the construction of over \$97.6 million in completed LEED (Leadership in Energy and Environmental Design) or sustainable projects. These projects have included residential, commercial and industrial types of construction, covering over 225,364 square feet of area.

With this relatively new type of design and construction, our teams have made great strides in obtaining the necessary skills to both document and execute sustainable projects of this type. With LEED accredited professionals on staff at JMW, we have created detailed procedures for tracking projects from creation through implementation. Our teams have been able to achieve tremendous success with respect to sustainability goals on behalf of our owners.

The process and execution of a sustainable project is greatly dependent on the communication skills and involvement of both the design and construction professionals. The earlier these teams begin to review the level of sustainability an owner seeks to achieve, the greater the chances for success. In addition, the decision to develop a sustainable project requires a team to closely review the type of materials specified, the construction staging proposed, the electrical and plumbing designs, as well as, the smaller details throughout the facility.

Our construction teams make every effort to perform and practice sustainability on every project. We work hard to divert construction waste from landfills, and to employ the use of local and recycled materials where possible. We have developed comprehensive Waste Management and Indoor Air Quality Programs, as well as, tracking forms necessary to maintain accurate records for the filing and recording of sustainable data.

In 2009, J.M. Wilkerson Construction won the Sustainability Practice award at the AGC Build Georgia Awards. AGC selected the DeKalb County Central Transfer Station, completed by our teams in 2008. This LEED Certified facility was delivered for just under \$25 million and was one of DeKalb County's first major LEED projects. The facility was situated on an existing brown field and required the removal of over 100,000 cubic yards of unsuitable material and incorporated both industrial and office building structures. The project was completed 4 months ahead of schedule with no owner change orders. More recently completed projects incorporating LEED or sustainable construction practices include the Indigo Hotel located in Athens, GA, CHRIS Kids located in Atlanta, GA, and Charlottetown Terrace located in Charlotte, NC.



Over 1532 tons of waste diverted
On Hotel Indigo - Athens, GA



Deepdene Park Restoration - Atlanta, GA

With the completion of the 93,477 square foot Indigo Hotel, J.M. Wilkerson Construction made history completing the 9th LEED Gold hotel worldwide. This was also the first hotel for Intercontinental Hotels Group (IHG) to reach a GOLD rating within their 4,400 hotels worldwide. This project diverted over 1,600 tons of construction waste from landfills and was constructed in only 12 months. This project won J.M. Wilkerson Construction the 2010 Sustainable Practice award from the AGC, as well as, a ULI award of Excellence.

J.M. Wilkerson Construction was also awarded The Affordable Housing Builder of the Year for Earthcraft Multi-family 2010. This award was presented for work on the CHRIS Kids project. This multi-family housing development devoted to help young adults from prior foster care situations, and was the first of a two-phase project. The award was presented by the Southface Energy Institute and was one of the first Builders Challenge multi-family projects recognized by the U.S. Department of Energy.

The \$11 million LEED Gold Affordable Housing project, Charlottetown Terrace, located adjacent to downtown Charlotte, was completed on time and within the authorities budget by the JMW team as a Construction Manager at Risk.

Charlottetown Terrace had a complex commissioning process where the owners managed the overall process but utilized both outside commissioning agents, as well as, our own team LEED AP to provide the necessary documentation and activities to reach their goal.

We worked with the Charlotte Housing Authorities to set up regularly scheduled meetings where commissioning was outlined, defining roles of responsibility. Team members were assigned specific scopes of work required to reach the LEED goals. JMW was assigned direct commissioning responsibilities that included the coordination and verification of many aspects of the enhanced commissioning process. Our team also provided direct assistance on all final training and verifications, as required by the commissioning process.

Both field and office staff provided reports, submittals and RFI's to the owner's commissioning team. Any changes in the construction documents or material selections required specific reporting to maintain accurate accounts of where the project stood. JMW's team was directly responsible for this coordination with the design team.

We provided all verification for materials, recycling, installation methods and waste reporting. We shared the responsibility with the rest of the owner's team that construction was in-line with the commissioning agent's base building design model. Commissioning meetings and inspections were pro-actively scheduled to include all major milestones for HVAC installation, lighting, roofing, and items that affected the base energy model set by the team.

Other sustainable construction experiences included working with teams like Energy Ace and DeKalb County's LEED consultants for the Indigo Hotel and DeKalb County Transfer Station. Each project had its own unique twist on the Commissioning process but was formatted in a more conventional Owner, Contractor, LEED consultant role. Our LEED and sustainable background offers great benefit and experience to meet the needs of any project.

JMW Teams have Successfully completed more than \$97.6 Million in LEED projects

- Indigo Hotel, Athens, GA - \$15.1 Million - LEED Gold
- DeKalb County Central Transfer Station & Administrative Headquarters - \$24.3 Million - LEED Certified
- CHRIS Kids, Atlanta, GA - \$4.8 Million
- Charlottetown Terrace, Charlotte, NC - \$11.1 Million - LEED Gold
- Imperial Hotel (Historic Affordable Housing Project - \$11 Million - LEED Multi-Family
- Lafayette Sustainable Housing Developments - \$5.7 Million
- Ponce City Market, Atlanta, GA - \$25.6 Million - LEED Silver

J.M. Wilkerson Construction is committed to the execution of innovative and challenging projects. We have made the commitment to provide the highest level of service combined with thoughtful and responsible construction practices.

Building Information Modeling (BIM)

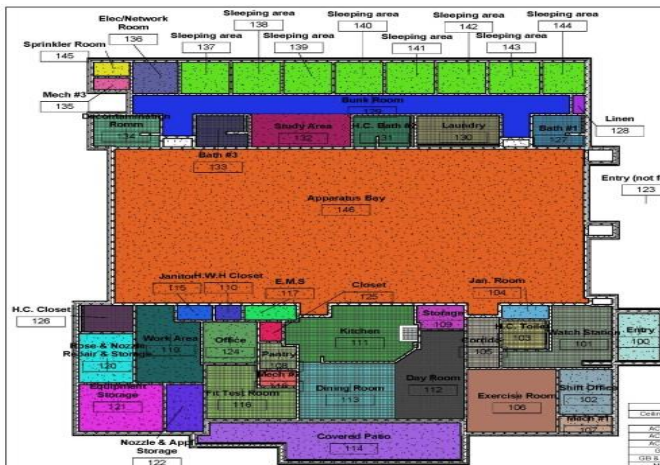
J.M. Wilkerson Construction utilizes Building Information Modeling (BIM) software on many projects. Understanding the importance of this technology for our industry, we have employees with experience understanding and utilizing BIM models for pricing, clarification and review. In addition, we work with our clients and design teams in the review of models for the betterment of the project.

BIM creates a dynamic 3D model of a project which aids in the concept, design, and construction process. It does this through the use of object-driven data which includes building geometry, spatial relationships, geographical information, quantities, and the properties of building components. This allows us to visualize, coordinate, predict costs, resolve conflicts, and extract data, before we actually start the construction process.

BIM has become a major part of our process from the pre-construction phase through final closeout, enabling the Owners, design team, and construction team to see the project in a 3D digital model, during all phases of construction. Being able to visualize the project at the conceptual phase, allows us to plan budgets, logistics, and phasing, as well as, to define the scope of work for the individual trades, scheduling around any conflicts seen in the model. This helps reduce costs that may have required rework, change orders, RFI's, and delays to the project.

JMW utilizes the following programs:

- Revit Architecture
- Revit Structure
- Revit MEP
- Auto CAD Civil 3D
- 3DS Max Design
- Navis Works
- QTO
- Auto CAD (Full Suite)



Number	Name	Room Schedule	Area	Room Type	Abbreviation
100	Living Room	100	11.00 SF	Living	100
101	Kitchen	101	10.00 SF	Kitchen	101
102	Dining Room	102	10.00 SF	Dining	102
103	Day Room	103	10.00 SF	Day Room	103
104	Exercise Room	104	10.00 SF	Exercise	104
105	Shift Office	105	10.00 SF	Office	105
106	Jan. Room	106	10.00 SF	Jan. Room	106
107	H.C. Closet	107	10.00 SF	Storage	107
108	Storage	108	10.00 SF	Storage	108
109	Storage	109	10.00 SF	Storage	109
110	Storage	110	10.00 SF	Storage	110
111	Storage	111	10.00 SF	Storage	111
112	Storage	112	10.00 SF	Storage	112
113	Storage	113	10.00 SF	Storage	113
114	Storage	114	10.00 SF	Storage	114
115	Storage	115	10.00 SF	Storage	115
116	Storage	116	10.00 SF	Storage	116
117	Storage	117	10.00 SF	Storage	117
118	Storage	118	10.00 SF	Storage	118
119	Storage	119	10.00 SF	Storage	119
120	Storage	120	10.00 SF	Storage	120
121	Storage	121	10.00 SF	Storage	121
122	Storage	122	10.00 SF	Storage	122
123	Storage	123	10.00 SF	Storage	123
124	Storage	124	10.00 SF	Storage	124
125	Storage	125	10.00 SF	Storage	125
126	Storage	126	10.00 SF	Storage	126
127	Storage	127	10.00 SF	Storage	127
128	Storage	128	10.00 SF	Storage	128
129	Storage	129	10.00 SF	Storage	129
130	Storage	130	10.00 SF	Storage	130
131	Storage	131	10.00 SF	Storage	131
132	Storage	132	10.00 SF	Storage	132
133	Storage	133	10.00 SF	Storage	133
134	Storage	134	10.00 SF	Storage	134
135	Storage	135	10.00 SF	Storage	135
136	Storage	136	10.00 SF	Storage	136
137	Storage	137	10.00 SF	Storage	137
138	Storage	138	10.00 SF	Storage	138
139	Storage	139	10.00 SF	Storage	139
140	Storage	140	10.00 SF	Storage	140
141	Storage	141	10.00 SF	Storage	141
142	Storage	142	10.00 SF	Storage	142
143	Storage	143	10.00 SF	Storage	143
144	Storage	144	10.00 SF	Storage	144
145	Storage	145	10.00 SF	Storage	145
146	Storage	146	10.00 SF	Storage	146
147	Storage	147	10.00 SF	Storage	147
148	Storage	148	10.00 SF	Storage	148
149	Storage	149	10.00 SF	Storage	149
150	Storage	150	10.00 SF	Storage	150
151	Storage	151	10.00 SF	Storage	151
152	Storage	152	10.00 SF	Storage	152
153	Storage	153	10.00 SF	Storage	153
154	Storage	154	10.00 SF	Storage	154
155	Storage	155	10.00 SF	Storage	155
156	Storage	156	10.00 SF	Storage	156
157	Storage	157	10.00 SF	Storage	157
158	Storage	158	10.00 SF	Storage	158
159	Storage	159	10.00 SF	Storage	159
160	Storage	160	10.00 SF	Storage	160
161	Storage	161	10.00 SF	Storage	161
162	Storage	162	10.00 SF	Storage	162
163	Storage	163	10.00 SF	Storage	163
164	Storage	164	10.00 SF	Storage	164
165	Storage	165	10.00 SF	Storage	165
166	Storage	166	10.00 SF	Storage	166
167	Storage	167	10.00 SF	Storage	167
168	Storage	168	10.00 SF	Storage	168
169	Storage	169	10.00 SF	Storage	169
170	Storage	170	10.00 SF	Storage	170
171	Storage	171	10.00 SF	Storage	171
172	Storage	172	10.00 SF	Storage	172
173	Storage	173	10.00 SF	Storage	173
174	Storage	174	10.00 SF	Storage	174
175	Storage	175	10.00 SF	Storage	175
176	Storage	176	10.00 SF	Storage	176
177	Storage	177	10.00 SF	Storage	177
178	Storage	178	10.00 SF	Storage	178
179	Storage	179	10.00 SF	Storage	179
180	Storage	180	10.00 SF	Storage	180
181	Storage	181	10.00 SF	Storage	181
182	Storage	182	10.00 SF	Storage	182
183	Storage	183	10.00 SF	Storage	183
184	Storage	184	10.00 SF	Storage	184
185	Storage	185	10.00 SF	Storage	185
186	Storage	186	10.00 SF	Storage	186
187	Storage	187	10.00 SF	Storage	187
188	Storage	188	10.00 SF	Storage	188
189	Storage	189	10.00 SF	Storage	189
190	Storage	190	10.00 SF	Storage	190
191	Storage	191	10.00 SF	Storage	191
192	Storage	192	10.00 SF	Storage	192
193	Storage	193	10.00 SF	Storage	193
194	Storage	194	10.00 SF	Storage	194
195	Storage	195	10.00 SF	Storage	195
196	Storage	196	10.00 SF	Storage	196
197	Storage	197	10.00 SF	Storage	197
198	Storage	198	10.00 SF	Storage	198
199	Storage	199	10.00 SF	Storage	199
200	Storage	200	10.00 SF	Storage	200

Personnel Capability

J.M. Wilkerson Construction's commitment to its employees has stayed strong throughout the company's history. JMW currently has over 120 employees. Located at our home office are 17 employees providing project and company management, as well as, estimating, accounting, marketing and administrative activities. Located in the field, providing supervision, are 19 employees. For additional detail see the break down below.

Home Office - 17
Project Engineers - 3

Superintendents - 19
Foremen - 8

Craftworkers - 35
Laborers/Helpers - 38

Safety Information

Safety in all of J.M. Wilkerson Construction's operations is not only a company goal, but a requirement. We create a culture in which safety is a core value. Our commitment is to provide a safe and productive environment for everyone involved with our projects. At no time will safety be compromised because of cost. OSHA standards are met or exceeded at all times.

It is JMW's belief that accidents can be prevented through planning, training and a cooperative effort in all areas of our operations, with our goal being to eliminate all injuries. This goal is accomplished by the following safe working practices on all of our construction sites.

The project managers, superintendents, foremen and safety manager have full support of management in enforcing the provisions of our Safety Policy, as it relates to the responsibilities assigned to them. Prior to start of work, each trade attends a preparatory meeting to discuss the scope of work, its hazards and controls.

Our superintendents and foreman are required to keep their safety training and education current. Each superintendent conducts weekly site safety meetings and inspections. We also utilize available safety resources such as the AGC's Site Safety Training Programs and the Construction Safety Competency Training courses.

JMW is a Drug Free Workplace, certified by the GA Workers Compensation Board.

Required Supervisor Training

OSHA 30 Hour
CPR / First Aid
Confined Space Entry
Fall Protection
Scaffold Training
Trench / Excavation Training

Site Safety Items

New Hire Safety Orientation Training
Site Safety Orientation
Drug Free Workplace and Testing
Safety Control System
Preparatory Meetings



Hartsfield Jackson - Atlanta, GA

Industry Affiliations, Memberships, Awards & Honors



Over the years, J.M. Wilkerson Construction has successfully completed many general construction projects for Federal, State, local and private clients. We have completed new construction, adaptive-reuse, historic rehabilitation, environmental, heavy civil, concrete, religious, industrial and tenant work. We pride ourselves on providing only the highest quality services, using the most professional teams possible. Over this history, JMW has been awarded many accolades for their services and successful completion of projects. These awards prove that team work help to make even the most challenging projects accomplishable. Listed below are only a few of the many awards and honors JMW has received.

- 2020 AGC Build Georgia Awards First Place - Bethel Tower Renovation & South Fork Pedestrian Bridge
- 2019 AGC Build Georgia Awards First Place - Wheat Street Tower
- 2018 AGC Build Georgia Awards First Place - Studioplex Commercial Podium
- 2017 AGC Build Georgia Awards First Place - Studioplex Parking Deck, Lake Blackshear Resort Renovations & Juniper & 10th Renos
- 2016 AGC Build Georgia Awards First Place/Best Sustainable Building Practices - Ponce City Market - Parcel F Deck, Atlanta Beltline North Avenue Plaza & Lockheed Martin B1 Emergency Stairwell Egress
- 2016 ACI First Place in the Parking Deck Category - Ponce City Market Parcel F Parking Deck
- 2015: AGC Build Georgia Awards First Place - Ponce City Market - The Flats, GA Trust preservation Award for Excellence in Sustainable Rehabilitation - Imperial Hotel
- 2014: AGC Build Georgia Awards First Place - Imperial Hotel, Urban Design Commission Awards Of Excellence First Place - Imperial Hotel, National Housing & Rehabilitation Association Awards Best Historic Renovation using Tax Credits Finalist - Imperial Hotel, Atlanta Regional Commission's Development of Excellence Award - Imperial Hotel, Edson Award for Tax Credit Excellence - Imperial Hotel, NALHFA Exemplary Project - Imperial Hotel, AIA Atlanta Honor Award for Residential Design - Imperial Hotel, APAB Award of Excellence - Imperial Hotel, Preservation's Best Award - Imperial Hotel
- 2013: AGC Build Georgia Awards First Place - The Sweet Auburn Curb Market - Restoration, AGC Build Georgia Awards First Place Best Sustainable Practices - The Sweet Auburn Curb Market - Restoration, Urban Design Commission Awards of Excellence Award First Place - The Sweet Auburn Curb Market - Restoration
- 2012: Non-Profit Building and Design Award from USBGC Charlotte Region Chapter, 2012 Sustainable Business Awards - Charlottetown Terrace, Apartment Renovation of the Year from Multi-Family Executive - Charlottetown Terrace, Green Project of the Year from Multi-Family Executive - Charlottetown Terrace, Design/Build Award Runner Up from DBIA Southeast Region - Hartwell City Hall, Design Award from the City of Decatur - 313 E. College Avenue
- 2011: AGC Build Georgia Awards First Place - CHRIS Kids
- 2010: AGC Build Georgia Awards First Place - Rialto Room, AGC Build Georgia Awards First Place - Hotel Indigo, Athens, GA, AGC Build Georgia Awards First Place - Peachtree Creek Slope Stabilization
- 2009: AGC Build Georgia Awards First Place - Castleberry Point Lofts, AGC Build Georgia Awards First Place - DeKalb County Central Transfer Station, AGC Build Georgia Sustainability Award - DeKalb County Central Transfer Station
- 2008: AGC Build Georgia Awards First Place - MARTA Fare Barriers, AGC Merit Build GA Award - Renaissance Walk at Sweet Auburn
- 2007: First Place Award in the Specialty Category from the American Concrete Institute (ACI) - Brook Run Skate Park, AGC Build Georgia Awards First Place - Georgia National Cemetery
- 2006: AGC Build Georgia Awards First Place - Hardman Farm Phase I Stabilization
- 2004: AGC Build Georgia Awards First Place - Holy Transfiguration Greek Orthodox Church
- 2003: First Place Award from the American Concrete Institute (ACI) - Bus Lot Reconstruction for MARTA Laredo Bus Facility
- 1999: Award of Excellence from the American Concrete Institute (ACI) - Stone Mountain Lake Spillway Replacement, Award of Excellence for Adaptive Use from the Atlanta Urban Design Commission - Swift & Co. Lofts
- 1997 First Place Award in the Mid-Rise Category from the American Concrete Institute (ACI) - The University of Georgia Chemistry Annex Building

Affiliations: Local 148 - Operative Plasters & Cement Masons and Local 926 - International Union of Operating Engineers and Georgia Branch AGC - Member

Professional References



Client References

<p>Name of Organization Project Location Dates of Service Project Description</p>	<p>Middle Street Partners Atlanta, Georgia April 2020 - Current 1015 Boulevard is a new 233,791 square foot mixed use development includes a 2 level basement parking excavation with 5 levels of wood frame residential construction on top. There is 5,000 square feet of retail space as well as building access along this newly developing west side Beltline trail that will create new exciting public spaces. With 323 units outlined in a mixture of unit sizes, this project will have a great level of activity helping to anchor its place along Boulevard and the Beltline Trail. The JMW teams are targeted to complete this project in early 2023.</p>
<p>Contact Person</p>	<p>Derek Owen - Managing Director - Design & Construction 675 Ponce de Leon Ave, Suite 8500, Atlanta, GA 30308 Telephone: 404.245.5039</p>
<p>Name of Organization Project Location Dates of Service Project Description</p>	<p>The Benoit Group Atlanta, Georgia May 2017 - Current J.M. Wilkerson Construction has worked with The Benoit Group on 3 projects, Wheat Street Towers, Bethel Tower and London Townhomes. All three of these projects are renovations around Atlanta, GA. The scope includes complete interior renovations with common spaces and some exterior work.</p>
<p>Contact Person</p>	<p>LaNorris Nixon 6780 Roswell Road, Suite 200, Atlanta, GA 30328 Telephone: 404.671.3781</p>
<p>Name of Organization Project Location Dates of Service Project Description</p>	<p>Columbia Residential Atlanta, Georgia September 2006 to current J.M. Wilkerson Construction has worked with Columbia Residential for over 13 years. JMW was selected as the General Contractor for the Columbia Tower project, Imperial Hotel Restoration and Juniper & 10th, all located in downtown Atlanta. All of these projects have received awards and acclaim. We continue to work with Columbia Residential today.</p>
<p>Contact Person</p>	<p>Robert Barfield - Vice President of Construction Services 1718 Peachtree Street. NW, STE 684, Atlanta, GA 30309 Telephone: 404.867.3652</p>
<p>Name of Organization Project Location Dates of Service Project Description</p>	<p>Jamestown, L.P. Atlanta, Georgia August 2013 - 2019 JMW has worked on several projects with Jamestown including The Flats Apartments, the Service Building and Parcel F Parking Deck, all of which are located at the new Ponce City Market (PCM) in Atlanta, GA. The Flats is over 330,000 sq. ft. of new residential apartments located inside PCM. The service building project involved the conversion of an old parking structure and service center into new retail projects. The Parcel "F" project consisted of two unique projects. The first project was the stabilization and construction of retaining walls. The second phase of construction consisted of the construction of an 8 story, 168,000 sq. ft. cast-in-place concrete parking structure, events space and vertical connection from North Avenue to the Beltline. Currently, JMW is called upon from time to time for smaller, task order work around the site.</p>
<p>Contact Person</p>	<p>Steve Simmons - Vice President Development & Construction 675 Ponce de Leon Ave, 7th Floor, Atlanta, GA 30308 Telephone: 404.885.7325</p>

Architect References

<p>Name of Organization Project Location Dates of Service Project Description</p>	<p>Surber Barber Choate & Hertlein Architects P.C. Atlanta, Georgia June 2005 - January 2014 JMW and Surber Barber Choate & Hertlein Architects have worked on various projects together including Hotel Indigo in Athens, GA, Hardman Farms Stabilization, Inman Park Village Lofts and the Imperial Hotel in Atlanta, GA. The scope included the interior and exterior renovation/rehab of the existing Imperial Hotel. This 58,780 sq. ft. urban rehabilitation included a complete interior demo to accommodate the build-out of 90 new residential apartment units. Interior work included new amenity and public spaces, reception areas, community rooms and management offices.</p>
<p>Contact Person</p>	<p>Dennis Hertlein - Principal 1409 North Highland Ave NE, Atlanta, GA 30306 Telephone: 404.872.8400</p>
<p>Name of Organization Project Location Dates of Service Project Description</p>	<p>Goode Van Slyke Architecture Atlanta, Georgia 2020 - Present J.M. Wilkerson Construction has worked with Goode Van Slyke Architecture On Bethel Tower, Bethel Ministry Hall and currently the Hightower Manor Redevelopment, all in the Atlanta area. We are also in pre-construction on another project in East Lake.</p>
<p>Contact Person</p>	<p>Paul Van Slyke- Principle 409 John Wesley Dobbs Avenue, Atlanta, GA 30312 Telephone: 404.523.5525</p>
<p>Name of Organization Project Location Dates of Service Project Description</p>	<p>BRPH Marietta, GA 2021 J.M. Wilkerson Construction worked with BRPH on the Lockheed Martin Project C project. This was a project of the highest security. It was very challenging that needed to be completed in a tight timeframe, which it was.</p>
<p>Contact Person</p>	<p>Jason Dunn - Vice President/CRO 2727 Paces Ferry Road SE, STE 1800, Atlanta, GA 30339 Telephone: 678.784.5840</p>



DeKalb County Transfer Station -
Atlanta, GA



Hotel Indigo - Athens, GA
Building for Generations



Castleberry Point Lofts -
Atlanta, GA

Trade References

R & D Caulking, Inc.
78 Dawson Village Way North
Suites 140-198
Dawsonville, GA 30534
Chuck Dye
770.619.0833

Masonry Dixie, Inc.
72 Alicia Lane, #66
Dahlonega, GA 30533
Jeff Sayne
770.844.9355

A&R Ironworks
3350 Montreal Station
Tucker, GA 30084
Mike Crowe
404-522-0097

Miller Mechanical C&E
1976 Airport Industrial Park Drive
Marietta, GA 30060
Tom Miller
404.569.0538

Century Fire Protection
2450 Satellite Blvd.
Duluth, GA 30096
Tony Etherton
770.945.2330

APEX Painting
2360 Rockaway Ind. Blvd.
Conyers, GA 30012
Jeana Arthur
770.760.1525

Reliance Interiors
1900 Cobb International Blvd NW,
STE B
Kennesaw, GA 30152
Jackie Kettering
770.514.6424

Roswell Drywall
7000 Peachtree Dunwoody Rd. NE
Building 5, Suite 200
Atlanta, GA 30328
Vladimir Sosnovsky
404.226.6694

Spectra Flooring
6684 Jimmy Carter Blvd., Suite 500
Norcross, GA 30071
Billy Buckley
770.729.2700

Financial Responsibility

Insurance and Bonding Agent and Carrier:

Agent:

Yates Insurance Agency
2800 Century Pkwy. NE, Suite 300
Atlanta, Georgia 30345
Kevin Neidert - 404.633.4321 (bonds)
Mark Yount - 404.633.4321 (insurance)

Bonding Carrier:

Swiss Re Corporate Solutions America Insurance Corp.
1200 Main Street, Suite 800
Kansas City, MO 64105
800-255-6931

Bonding of \$100 million single, \$200 million aggregate
A.M. Best's Rating of A 15

*Bonding capacity letter will be provided upon request

Banking References

Truist Bank
303 Peachtree Street, 32nd Floor
Atlanta, GA 30308
Mike Stevens - 404.588.8983



Georgia National Cemetery - Canton, GA

Executive Resumes



Building for Generations



Education

Kansas State University
Bachelor of Science – Business
Administration – 1968

Business History

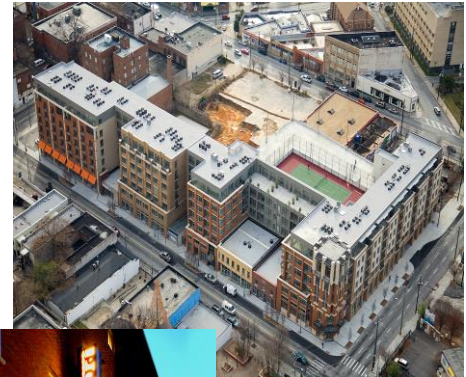
J.M. Wilkerson Construction
Co., Inc.
Owner/Chairman 1982 – Present

Holder Construction Company
Superintendent 1972 – 1981

U. S. Army
1st Lieutenant,
Corps of Engineers
1968 - 1971

Jim Wilkerson learned solid values growing up in rural Kansas, graduating from Kansas State University in 1968. He also learned valuable life and construction skills serving three years as an officer in the U.S. Army, Corps of Engineers. After graduating from Kansas State University, he worked for Atlanta-based Holder Construction Company for ten years. He won Holder's coveted Superintendent of the Year Award on two separate occasions, and he appreciated the opportunity to get involved with both large and small projects with such a reputable company.

In 1982, at the age of 35, Jim Wilkerson started J.M. Wilkerson Construction Co., Inc. He has overseen over \$500 million worth of construction in those years. He feels one of his greatest accomplishments has been putting a great team together - one that can manage through good times as well as adversity. Jim Wilkerson has always believed the success of a business depends on the quality and performance of its people. JMW has always prioritized the recruitment of the best quality employees and encourages continuous improvement through training and learning new developments in the industry to improve client satisfaction.



Building for Generations



Education

University of Kansas
Bachelor of Science, Civil
Engineering - 1987

Business History

J.M. Wilkerson Construction
Co., Inc.
President/CEO
2014 - Present

Executive Vice President
1994- 2014

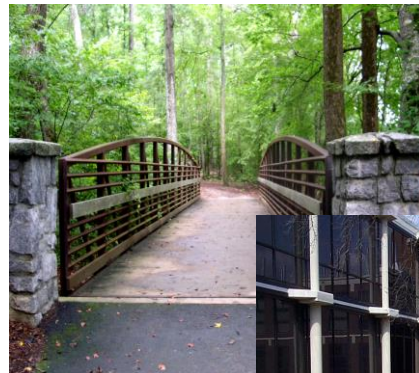
MW Builders, Inc.
Estimating Manager 1990 - 1994

MW Builders, Inc.
Estimator/Project Manager
1985 - 1990

Brett Hawley has over twenty nine years of experience in the construction industry in positions ranging from field engineer to President. He specializes in estimating and procurement and has extensive experience in hospitality, senior living, institutional retail facilities and heavy/industrial specialty contracting.

Representative Experience

- Computational Quantum Chemistry Annex , University of Georgia** - New Construction
Athens, GA - \$3.3 Million
- Sports Arena/Sports Annex, Georgia State University** - Addition/Renovation
Atlanta, GA - 1.9 Million
- Dynamic Metals Lofts** - New Condominiums, Atlanta, GA - \$5.6 Million
- MARTA - Fare Barriers** - Specialty Construction, Atlanta, GA - \$ 19.1 Million
- Ponce City Market Service Projects** - Various service projects around PCM, Atlanta, GA - Amount Varies
- Ponce City Market Parcel F** - Constructed new retaining walls and parking deck -
Atlanta, GA - 16.8 Million
- Studioplex Parking Deck** - New parking structure, Atlanta, GA - \$5 Million
- Wheat Street Towers** - Senior Living Renovations, Atlanta, GA - \$15,521,754
- 664 Seminole** - New Apartment Building, Atlanta, GA - \$6,350,000
- Bethel Towers Apartments** - Low Income Living Renovations, Atlanta, GA - \$16,692,503
- Juniper & 5th** - New Luxury Condos, Atlanta, GA - \$46,448,365
- Hightower Manor Redevelopment** - Senior/Adult Living Renovations, Atlanta, GA - \$19,743,896
- Intrada Westside** - New Construction Affordable Housing, Atlanta, GA - \$22,885,460
- 1015 Boulevard** - New Apartment Building, Atlanta, GA - \$51,081,879
- Avondale Hills Apartments** - New Apartment Complex, Decatur, GA - \$39,603,418



Building for Generations



Education

University of South Carolina
Bachelors of Science, Marketing -
1994

Business History

J.M. Wilkerson Construction
Co., Inc.
VP - Pre-Construction/Estimating
2014 - Present

Chief Estimator/Engineer/Quality
Assurance Rep. 1999 - 2014

Blue Circle Materials
Estimator/Sales 1996-1999

Austin Pruitt has worked with J.M. Wilkerson Construction Co., Inc. as an estimator, engineer and a quality assurance representative. Pruitt is familiar with the layout software, Surveyors Module International (SMI) and Transit Design Systems (TDS). His knowledge of construction and his ability to coordinate subcontractors makes him a valued member of the J.M. Wilkerson Estimating Department. Austin works with both our Commercial Construction bids and Heavy Construction Departments and leads most estimating for JMW.

Representative Experience

Hightower Manor Redevelopment - Senior/Adult Living Renovations, Atlanta, GA - \$19,743,896

Intrada Westside - New Construction Affordable Housing, Atlanta, GA - \$22,885,460

1015 Boulevard - New Apartment Building, Atlanta, GA - \$51,081,879

Avondale Hills Apartments - New Apartment Complex, Decatur, GA - \$39,603,418

664 Seminole - New Apartment Building, Atlanta, GA - \$6,350,000

Bethel Towers Apartments - Low Income Living Renovations, Atlanta, GA - \$16,692,503

Juniper & 5th - New Luxury Condos, Atlanta, GA - \$46,448,365

Wheat Street Towers - Senior Housing Renovation, Atlanta, GA - \$15,521,754

Juniper & 10th High-Rise Renovation - Renovations to an existing AHA property. Atlanta, GA - \$14.6 Million

Venue Brookwood Apartments - New apartment complex, Atlanta, GA - \$48.7 Million

Ponce City Market - New multi-use construction. Atlanta, GA - \$25.6 Million

92 West Paces Ferry - High-rise luxury Apartment housing, Atlanta, GA - \$31 Million

Lockheed Martin Aeronautics Air Force Plant #6 Data Center - New and renovated data center for LMCO's developing programs. Marietta, GA - \$3.0 Million

Glen Iris Lofts - Phases I & II - Mixed-Use Development, Atlanta, GA - \$15.5 Million

Renaissance Walk at Sweet Auburn - Mixed-Use Development, Atlanta, GA - \$32 Million

DeKalb County Central Transfer Station - New DeKalb County Central Transfer Station
Decatur, GA - 24.3 Million

Aramore Condominiums - Phase I & II - Mixed-Use Development, Atlanta, GA - \$15.2 Million



Building for Generations



Education

University of Oklahoma
Bachelor of Architecture - 1996

Business History

J.M. Wilkerson Construction
Co., Inc.
Vice President
2014 - Present

Director of Business Development
2008 - 2014

McChesney Capital Partners,
LLC
Director of Development 2003 -
2008

Perkins & Will
Project Architect 2002 - 2004

RTKL
Project Architect 1999 - 2002

Mike Travis has been connected to the design and construction industry for more than 23 years. As an Architect, he worked on over a billion dollars worth of construction projects. As a Developer/Owner's Representative, Mike oversaw hundreds of millions of dollars worth of work put in place for private equity teams, facilitating both the design and entitlement processes. Now, as a General Contractor, he has a wealth of knowledge, matched by few. This allows him to act as a bridge between Developer, Design Team and Construction Team. This coordination role has been very valuable as one of our leaders in our pre-construction activities and throughout the construction process.

Representative Experience - Construction

Juniper & 5th - New Luxury Condos, Atlanta, GA - \$46,448,365

Client Lead GGC - Leads On-Call work at Georgia Gwinnett College - \$4 Million +

Bethel Towers Apartments - Low Income Living Renovations, Atlanta, GA - \$16,692,503

Wheat Street Towers - Senior Living Renovations, Atlanta, GA - \$15,521,754

Imperial Hotel - Renovation of historic 1910 hotel - Atlanta, GA - 10.9 Million

Studioplex Parking Deck - New parking structure, Atlanta, GA - \$5 Million

Venue Brookwood Apartments - New apartment complex, Atlanta, GA - \$48.7 Million

92 West Paces Ferry - High-rise luxury Apartment housing , Atlanta, GA - \$31 Million

Ponce City Market - High-rise luxury Apartment Housing, Service Building, Retail and Heavy construction, Podium Parcel "F", Atlanta, GA - \$48 Million

Representative Experience - Development

Etiwan Pointe - New Townhome Complex - Mount Pleasant, SC - \$42 Million

The Foundry Park Inn and Spa - Historic Renovation /Hospitality - Athens, GA - \$15 Million

Representative Experience - Design

The Clare - Mixed-Use - Senior Living - Chicago, IL - \$105 Million

Our Lucaya Resort - New Resort Complex - Freeport Bahamas - \$400 Million



Building for Generations



Education

Liberty University,
Lynchburg, VA
Bachelor of Science, Business
Marketing & Management

Southern Polytechnic State
University
Project Management / Construction
Management

Business History

J.M. Wilkerson Construction
Co., Inc.
Vice President - 2019 - Present

Senior Project Manager 2014 -2019

Project Manager 2007 - 2014

Strategic Outsourcing Solutions,
LLC

With over eighteen years experience in the construction industry, Chris Griffeth is an asset to any project. Chris was previously one of JMW's most accomplished project managers. Chris has worked on all types of projects and has been with the JMW team for over 15 years. Possessing many strengths in his management, Chris has become quite successful in the administration of HUD or federally funded as well as task order or on-call projects. He has successfully completed multiple projects for the Atlanta Housing Authority, City of Atlanta as well as Federal and Military agencies. He enjoys working on difficult and challenging projects and believes that communication between the Owner, Architect and Contractor is critical to a successful project.

Representative Experience

Multiple Lockheed Martin Aeronautics Projects - Chris has completed over 350 projects in the past 6 years for the Lockheed Martin company. All types from new construction to heavy interior renovations and additions. Marietta, GA - in excess of \$45 Million

Hightower Manor Redevelopment - Senior/Adult Living Renovations, Atlanta, GA - \$19,743,896

Intrada Westside - New Construction Affordable Housing, Atlanta, GA - \$22,885,460

Lockheed Martin Project C - New Construction. Marietta, GA - 29,941,000

Bethel Towers Apartments - Low Income Living Renovations, Atlanta, GA - \$16,692,503

Juniper & 10th High-Rise Renovation - Renovations to an existing AHA property. Atlanta, GA - \$14.6 Million

Clorox - Kennesaw Facility - Interior Office Renovations, Kennesaw, GA - \$909,000

Imperial Hotel - Historic renovation on existing hotel. Atlanta, GA - \$10.9 Million

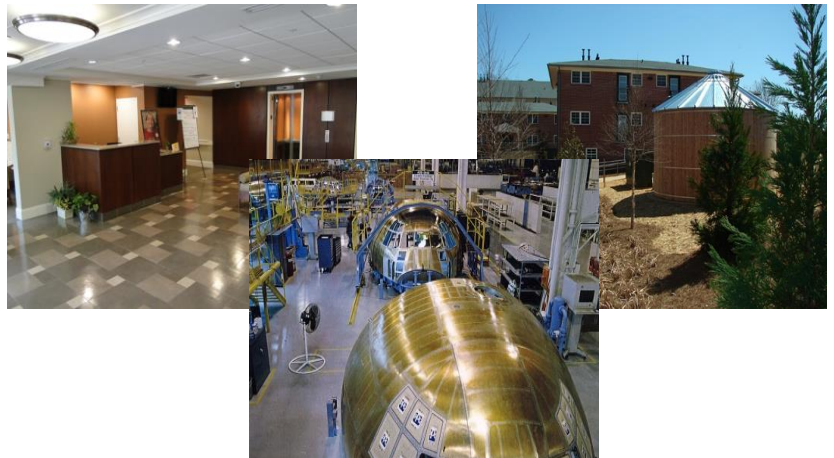
Sweet Auburn Curb Market- Historic Restoration of an Atlanta landmark property. Atlanta, GA - \$1.42 Million

Lockheed Martin Aeronautics Air Force Plant #6 Data Center - New and renovated data center for LMCO's developing programs. Marietta, GA - \$3.0 Million

Marion Road AARA High-Rise Renovations - Renovation to an existing AHA property. Gwinnett County, GA - \$1.6 Million

Chris Kids - The Safety Net - New and Renovated construction of housing development for existing not-for profit. Atlanta, GA - \$ 4.8 Million

Hightower Manor AARA High-Rise Renovations - Renovation to an existing AHA property. Gwinnett County, GA - \$1.1 Million



Building for Generations

Tenant Interiors and Retail Experience



Building for Generations

Clorox Maguire Office Interior Renovations

Forest Park, Georgia



J.M Wilkerson Construction Co., Inc. was selected as the General Contractor for the Clorox Maguire Office Interior Renovations in Forest Park, GA.

The scope of the project was to build out the existing first floor and attic of the front office area, construct the shift change area and maintenance area toilet rooms, modify trucker toilet room and install finishes and furnishings in the control room.

This work also included demolition of select areas and rework to existing systems as noted on drawings.

Client

Clorox Manufacturing Company
1000 Cobb Place Blvd, Bldg. 100
Kennesaw, Georgia 30144
Ken McNeely
770.608.9541

Architect/Engineer

Matrix Technologies, Inc.
1760 Indian Wood Circle
Maumee, OH 43537
Brett Rygalski
419.897.7206 ext. 492

Start Date

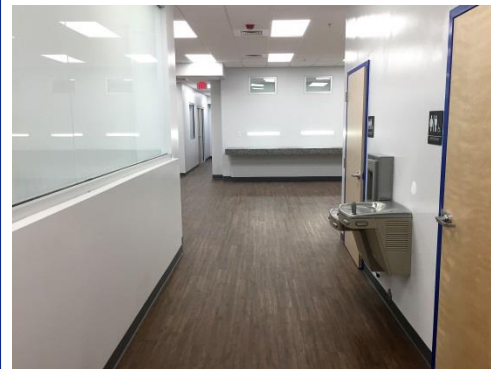
May 2017

Completion Date

September 2017

Contract Amount

\$ 1,825,721



Building for Generations

J.M. Wilkerson Construction Co., Inc. served as the general contractor for the Clorox Kennesaw Facility in Kennesaw, GA.

This project consisted of the renovation/reorganization of existing office space to achieve a maximum occupancy of up to 150 people. This 13,000 sq. ft. project will maximize the functionality of existing property to support the maximum occupancy requirements, by repurposing and/or reconfiguring existing spaces. Other projects included the renovation of bathrooms, training spaces, labs, relocating lockers, new handicap ramp, kitchen improvements as well as the installation of a bike shelter, smoke shelter and a car charging station.

Client

Clorox Services Company
1000 Cobb Place Blvd. Bldg. 100,
Kennesaw, GA 30144
Rob Ruscoe
404.216.5112

Architect/Engineer

Cannon Design
225 North Michigan Ave. Suite 1100,
Chicago, IL 60601
Brett Lawrence
312.332.9600

Start Date

April 2016

Completion Date

November 2016

Contract Amount

\$1 Million



J.M. Wilkerson Construction Co., Inc. was selected as the general contractor for the redevelopment of the Braelinn Village Shopping Center located in Peachtree City, GA.

This complex renovation consisted of the total replacement of over 2,000 feet of existing wall façade including new framing, brick, EIFS and storefront window systems. Additional scope included over 240,000 sq. ft. of roof replacement, extensive site work and paving throughout. New landscaping and public pedestrian areas were also created to enhance the public shopping experience. The exterior renovation included the addition of 18 helical piers ranging in depths from 39 to 120 feet, all of which were installed inside open businesses, during normal business hours. This project was completed in phases to maintain access for tenants and patrons.

Client

The Shopping Center Group
John Sebring
770.955.2434

Architect

American Structurepoint, LLC
Steve Hanscomb
317.547.5580

Start Date

August 2009

Completion Date

May 2014

Contract Amount

\$6 Million



ARC Tenant Build Out

Kennesaw, Georgia

J.M. Wilkerson Construction Co., Inc. served as the general contractor for the ARC tenant build out at Two Barrett Lakes in Kennesaw, GA.

The scope of work for this interiors project included the demolition of 8,500 sq. ft. of existing office space including walls, ceilings and carpet. Upon completion of all demolition, JMW's teams combined 2 existing tenant spaces into one 8,500 sq. ft. office for new tenant ARC. The construction consists of 10 new offices, a new corporate conference room and a new work/copy room. JMW also remodeled the entire working space and corridors, redistributing HVAC, updated all existing lights, electrical and sprinkler system as part of the total scope of work.

Client

P&L Barrett LP
3225 Cumberland Parkway,
Suite #400
Robert Maddux
770.980.0808

Architect/Engineer

Hendrick, Inc Professional
Corporation
Eight Piedmont Center, Suite 300
Atlanta, GA 30305
Nancy Kelly
404.261.9383

Start Date

July 2012

Completion Date

September 2013

Contract Amount

\$127,000



Building for Generations

Marietta Road High-rise Interior Renovations

Atlanta, GA



J.M. Wilkerson Construction Co., Inc. was selected as the General Contractor to complete renovations at the Marietta Road High-rise development in Atlanta, GA, managed by The Habitat Company located in Chicago, IL.

The project fell under The Atlanta Housing Authority (AHA) and HUD guidelines, and was funded through the American Recovery and Investment Act. This existing 7 story building's scope included both exterior building changes as well as interior modifications. Public space renovations included new seating and lobby areas. Additional scope, added to the project, included updated laundry facilities and mail rooms. System upgrades included HVAC work in public areas. Exterior renovations included roofing, windows, site seating areas, new storefront entry doors and openings, and ADA upgrades. All work took place during owner and tenant occupancy and were completed on time and within budget.

Client

The Habitat Company
225 Peachtree Center S Tower
Atlanta, GA 30303
Shannon Taylor
404.845.0911

Architect

Lord Aeck Sargent
1201 Peachtree Street, NE
Atlanta, GA 30361
Jay Silverman
877.929.1400

Start Date

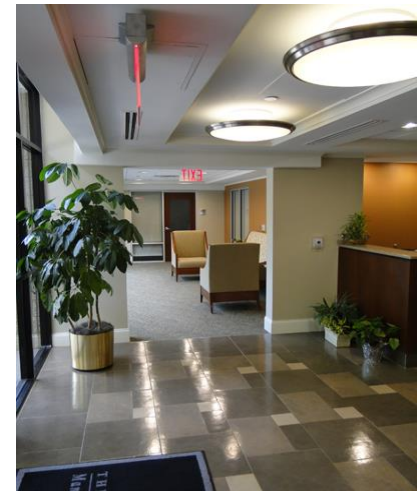
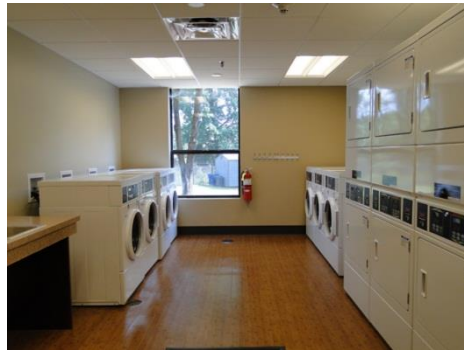
October 2010

Completion Date

March 2011

Contract Amount

\$1.4 Million



Building for Generations

J.M. Wilkerson Construction Co., Inc. served as the general contractor for the construction of an Orange Theory Fitness in Marietta, GA.

This project included the interior tenant renovation of an existing 3,833 sq. ft. suite to accommodate a new fitness studio. The scope of work included the demolition of existing space, addition of new partitions and millwork as well as additions to the electrical, plumbing and mechanical.

Client

JM Kennesaw, LLC
556 Pine Valley Rd, SE
Marietta, Georgia 30067
Jamie Weeks
404.606.0267

Architect/Engineer

Thomas Sawyer, AIA
3772 Ellsworth Way
Atlanta, Georgia 30319
404.432.0294

Start Date

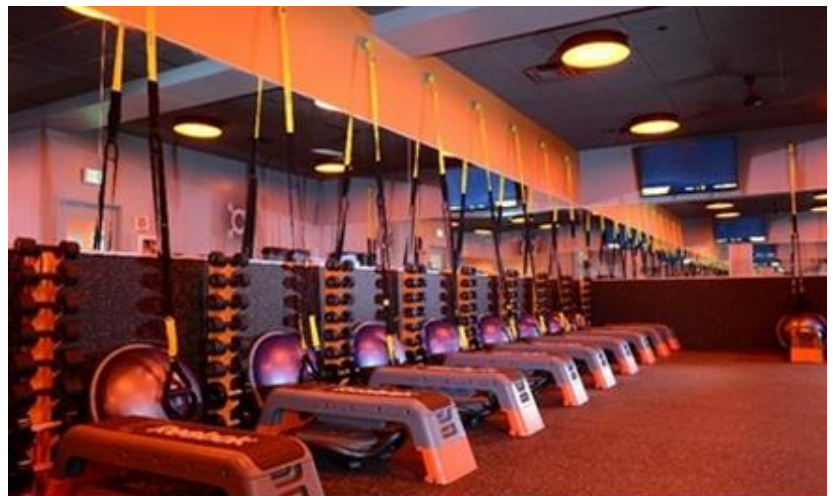
August 2015

Completion Date

October 2015

Contract Amount

\$211,000.00



J.M. Wilkerson Construction Co., Inc. served as the general contractor for the Dickey's BBQ in Peachtree City, GA.

Contracted directly by a new Dickey's franchise owner and the Shopping Center Group, located in Atlanta Georgia, the JMW teams constructed the new Dickey's BBQ, located in the Braelinn Village Shopping Center. The JMW teams demolished and reconfigured an old restaurant location that had been vacant for over 8 years into the new proto-type Dickey's BBQ chain moving into the Southeastern United States. The project included a total build out with all finishes, new HVAC, plumbing and kitchen modifications. Installation of all kitchen equipped with custom finishes were provided by JMW's in-house interiors teams. This project was completed on time and with-in budgets.

Client

Braelinn Village I LLC & Braelinn Village II LLC c/o ASB Capital Management, LLC
7501 Wisconsin Ave., Suite 200
Bethesda, MD 20814

Architect/Engineer

Wakefield Beasley & Associates
5155 Peachtree Pkwy
Building 300, Suite 3220
Norcross, GA 30092

Start Date

November 2010

Completion Date

January 2011

Contract Amount

\$154,371



Building for Generations

Excel Electrical Technologies

Kennesaw, Georgia

J.M. Wilkerson Construction Co., Inc. served as the general contractor for Excel Electrical Technologies at Barrett Summit in Kennesaw, GA.

JMW's interiors teams worked to increase the existing office space of Excel Electrical Technologies office space by 1,100 sq. ft. Teams then constructed 5 new offices and 1 work room. Additional scope included the total renovation of all common areas throughout the 8,000 sq. ft. space. Construction of all new built-in desks and case work occurred as well as renovations to kitchen / break and conference room areas. This project was completed while Excel remained open and in operation. Our teams worked hard to minimize the disruption to their day to day activities and logged many after-hours shifts to complete the project on time and within the clients budgets.

Client

P&L Barrett LP
3225 Cumberland Parkway,
Suite #400
Robert Maddux
770.980.0808

Architect/Engineer

Fowler Design Associates, Partnership
One Midtown Plaza
1360 Peachtree St. NE, Suite 1105
Atlanta GA 30309
Mark Crittenden
404.73.5900

Start Date

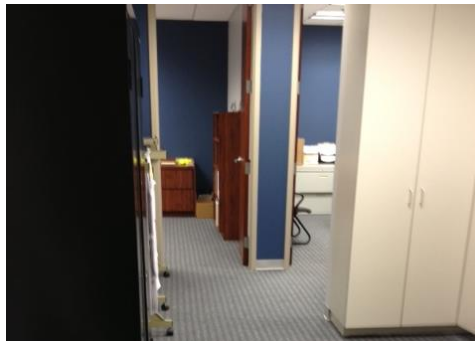
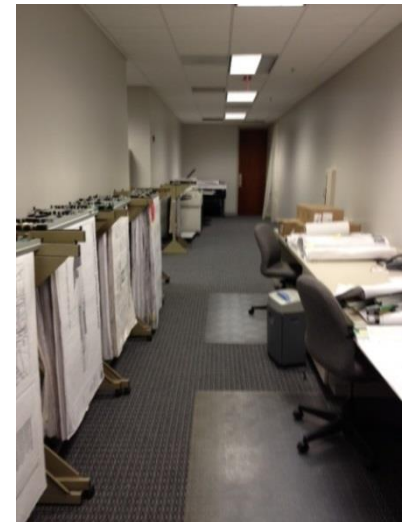
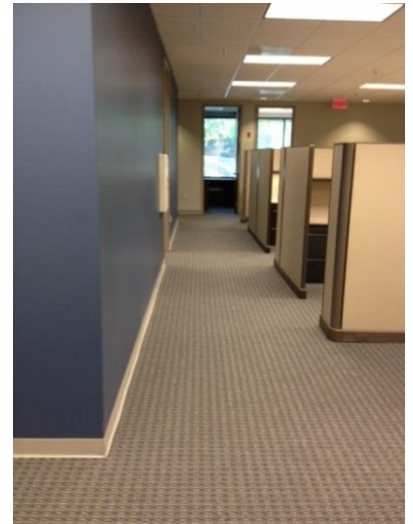
September 2012

Completion Date

November 2012

Contract Amount

\$106,000



Building for Generations

The Rialto Room - LEED "Gold"

Athens, GA



Within the Hotel Indigo, located in Athens, GA, is an exciting music and entertaining venue that J.M. Wilkerson Construction Co., Inc. developed as a second project.

The Rialto Room, named for the legendary Rialto Ballroom in Liverpool, England, was built in less than 5 months. This unique and complex interiors project included custom bar and millwork details, hand cut stone and many different types of wall and floor finishes. In addition to the finished spaces, a state of the art sound and lighting system was installed in the listening room. This interior build-out followed the same sustainable construction practices demanded by the LEED-Gold Hotel Indigo project. Today, the Rialto Room is home to some of the nation's best music acts and serves as an events venue for both hotel and private parties.

Client

Athens Hospitality Holding Group, LLC
Barry Rutherford
404.255.2821

Architect

TS Adams Studios Architects, Inc.
Bryan Mermans
678.358.0909

Start Date

April 2009

Completion Date

August 2009

Contract Amount

\$1.6 Million

Awards

2010 Build Georgia 1st place, 2010 Best Sustainable Building Practices



Building for Generations

Marian Road High-rise Interior Renovations

Atlanta, GA



J.M. Wilkerson Construction Co., Inc. was selected as the General Contractor to complete renovations at the Marian Road High-rise development in Atlanta, GA, managed by The Habitat Company located in Chicago, IL.

The project fell under The Atlanta Housing Authority (AHA) and HUD guidelines, and was funded through the American Recovery and Investment Act. This existing 9 story building renovation scope included improvements / new interior and exterior storefront entries, windows, public spaces, seating and lobby areas. Additional scope, added to the project, included updated laundry facilities and mailrooms. Exterior improvements included roofing, windows, site seating areas and ADA upgrades. The building's infrastructure was also modified by providing updated storm and sanitary lines. All renovations took place during tenant occupancy and were completed on time and within budget.

Client

The Habitat Company
225 Peachtree Center S Tower
Atlanta, GA 30303
Shannon Taylor
404.845.0911

Architect

Lord Aeck Sargent
1201 Peachtree Street, NE
Atlanta, GA 30361
Jay Silverman
877.929.1400

Start Date

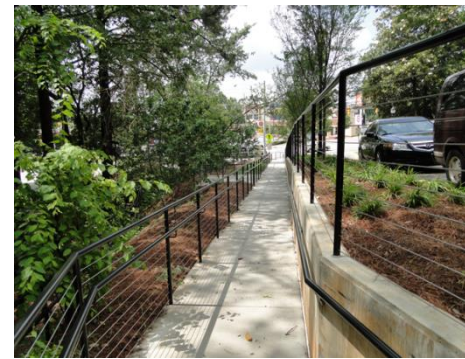
October 2010

Completion Date

March 2011

Contract Amount

\$1.4 Million



Building for Generations

J.M. Wilkerson Construction Co., Inc. served as the general contractor for the renovated Liberty Title in Kennesaw, GA.

This 3,100 sq. ft. office interiors project included the demolition of all finishes and replacement of walls, floors and partitions within suite 300. The ceilings, HVAC, lighting and fire sprinkler systems were modified to configure with the new office layouts. This work was completed during both standard house as well as night shifts to minimize disruptions to existing tenants within the facility. The JMW interiors teams completed this project ahead of schedule and within the budgets.



Client

P&L Barrett LP
3225 Cumberland Parkway, Suite
#400
Robert Maddux
770.980.0808

Architect/Engineer

Hendrick, Inc. Professional
Corporation
Eight Piedmont Center, Suite 300
Atlanta, GA 30305
Nancy Kelly
404.261.9383

Start Date

May 2010

Completion Date

July 2010

Contract Amount

\$57,221



Building for Generations

J.M. Wilkerson Construction Co., Inc. served as the general contractor for the renovation to the Pope and Land management office at One Barrett Lake in Kennesaw, GA.

The 2,400 sq. ft. interiors project consisted of the demolition and reconfiguration of an existing space. All drywall and ceilings were updated or replaced and new paint was included throughout. Kitchen and meeting areas were configured as well as all lighting, HVAC and sprinkler modifications were coordinated with our team. This class "A" office space was finished ahead of schedule and with-in the projects budgets.

Client

P&L Barrett LP
3225 Cumberland Parkway,
Suite #400
Robert Maddux
770.980.0808

Architect/Engineer

Hendrick, Inc Professional
Corporation
Eight Piedmont Center, Suite 300
Atlanta, GA 30305
Jennifer Treter
404.261.9383

Start Date

April 16, 2012

Completion Date

April 27, 2012

Contract Amount

\$63,631



Hightower Manor High-rise Interior Renovations

Atlanta, GA



J.M. Wilkerson Construction Co., Inc. was selected as the General Contractor for renovations to the Hightower Manor High-rise development in Atlanta, GA, managed by The Habitat Company located in Chicago, IL.

The project fell under The Atlanta Housing Authority (AHA) and HUD guidelines and was funded through the American Recovery and Investment Act. This existing 7 story senior and assisted living housing facility was occupied throughout the renovation project. The scope consisted of improvements to the basement, first floor and terrace levels, as well as, site and exterior improvements. Reroofing, HVAC, plumbing and electrical upgrades concluded our updates.



Client

The Habitat Company
225 Peachtree Center S Tower
Atlanta, GA 30303
Shannon Taylor
404.845.0911

Architect

Lord Aeck Sargent
1201 Peachtree Street, NE
Atlanta, GA 30361
Jay Silverman
877.929.1400

Start Date

October 2010

Completion Date

June 2011

Contract Amount

\$1.3 Million



Building for Generations

Riskconnect - Phase III, Suite 500

Kennesaw, Georgia



J.M. Wilkerson Construction Co., Inc. served as the general contractor for Riskconnect, Phase III, in Suite 500 at Barrett Lake in Kennesaw, GA.

JMW expanded Riskconnect's existing office space by 6,500 sq. ft. as part of their Phase III of renovations. Our teams combined adjacent office space adding 9 new office offices, a conference room, communal phone privacy room and an IT/data closet space. This connection increased their existing space allowing for better circulation and connectivity for their expanding office needs. Additional work included complete updates to their common space throughout the office space as well as new kitchen spaces. This was the 6th project of this type for the P&L ownership team completed by the JMW interiors team.

Client

P&L Barrett LP
3225 Cumberland Parkway,
Suite #400
Robert Maddux
770.980.0808

Architect/Engineer

Hendrick, Inc Professional
Corporation
Eight Piedmont Center, Suite 300
Atlanta, GA 30305
Nancy Kelly
404.261.9383

Start Date

February 2013

Completion Date

April 2013

Contract Amount

\$180,000



Building for Generations

Snap Fitness

Peachtree City, Georgia

J.M. Wilkerson Construction Co., Inc. served as the general contractor for the Snap Fitness in Peachtree City, GA.

This project was the 6th tenant renovation for the JMW interiors team located in the Braelinn Village Shopping Center. Snap Fitness Center was built out from one of the existing out parcels, formally a Blockbuster video store. This building underwent a total interiors renovation that included the removal of all existing interior partitions. The new Gym facility included new locker rooms and restroom facilities, installation of finishes, equipment and children's play center. Existing HVAC, lighting and sprinkler systems were updated as needed to work with the new floor plans.

Client

Braelinn Village I LLC & Braelinn Village II LLC c/o ASB Capital Management, LLC
7501 Wisconsin Ave., Suite 200
Bethesda, MD 20814

Architect/Engineer

Rose & Reid Design Associates, P.C
259 Highway 74, Suite I
Peachtree City, GA 30269
Jim Finney
770.632.6161

Start Date

May 2012

Completion Date

October 2012

Contract Amount

\$214,386



Building for Generations

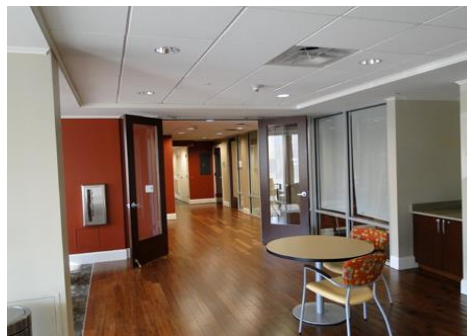
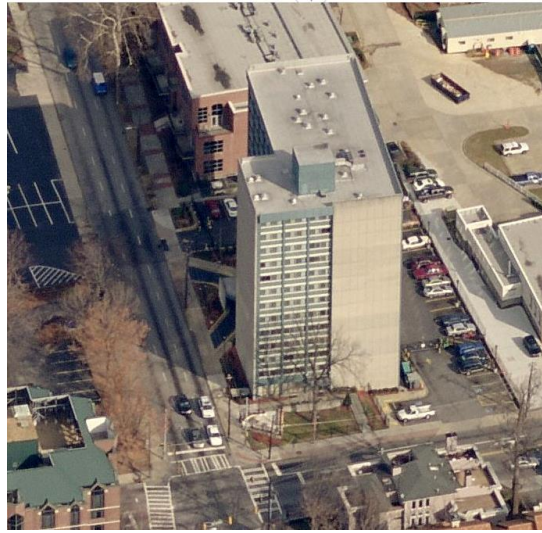
Juniper & Tenth High-rise Interior Renovations

Atlanta, GA



J.M. Wilkerson Construction Co., Inc. was selected as the contractor for the renovations to the Juniper & Tenth High-rise development in Atlanta, GA, managed by The Habitat Company out of Chicago, IL.

The project falls under The Atlanta Housing Authority (AHA) and HUD guidelines and is funded through the American Recovery and Investment Act. This existing 14 story building, housing senior and special needs residents, was occupied throughout the renovation project. The project involved improvements to the basement, first floor and public spaces throughout the building. Office updates as well as site and exterior building improvements were included. Additional reroofing, HVAC, plumbing and electrical upgrades concluded our scope of work



Client

The Habitat Company
225 Peachtree Center S Tower
Atlanta, GA 30303
Shannon Taylor
404.845.0911

Architect

Lord Aeck Sargent
1201 Peachtree Street, NE
Atlanta, GA 30361
Jay Silverman
877.929.1400

Start Date

October 2010

Completion Date

March 2011

Contract Amount

\$900,000

Building for Generations

Commercial/Public
Sector/Educational Experience



Building for Generations

Local 926 Operator's Training Center

Cedartown, Georgia



J.M. Wilkerson Construction Co., Inc. was selected as the General Contractor for the Local 926 Operator's Training Center in Cedartown, GA.

This Design/Build project includes all site work and underground utilities for a new 8,376 SF pre-engineered metal building. The new building will house both office and classroom spaces and a new training bay with crane for servicing equipment. The build outs will include paint, flooring and framing/finishing, which we will self perform.

Client

I.O.U.E. LOCAL 926
6521 Dale Road
Rex, GA 30273
Mark Templeton
770.474.5926

Architect/Engineer

Boggs Vickers Architecture
41 Perimeter Center East, Suite 630,
Atlanta, GA 30346
Joshua Word
404.937.6550

Start Date

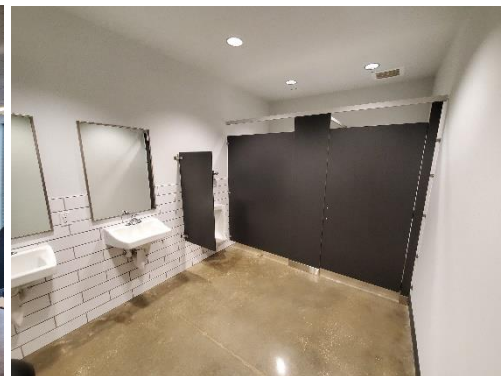
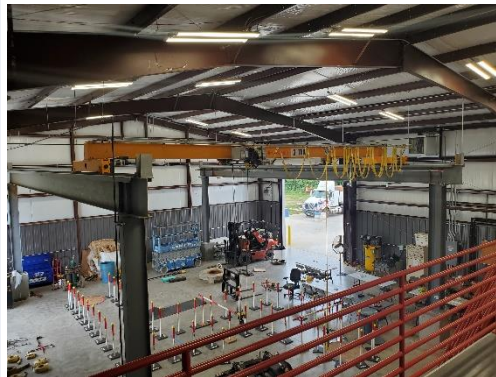
July 2019

Completion Date

January 2020

Contract Amount

\$1,446,878



Building for Generations

Lake Blackshear Resort Rehabilitation

Cordele, Georgia



J.M. Wilkerson Construction Co., Inc. served as the general contractor for the Lake Blackshear Resort in Cordele, GA.

The Lake Blackshear Resort project is an approximately 65,000 sq. ft. resort located on Georgia Veterans Memorial Park. The first building in need of renovation was a one story space, used primarily as a conference center. The other building was a 3 story lodge. The scope of work included new finishes and drop ceiling in the conference center as well as replacing windows/window sills. It also included new finishes, indoor pool fill-in, balcony demolition, reskinning the exterior, new windows, and various other renovation items in the lodge. This project finally included new finishes and windows in 8 individual villas.

Client

Georgia Department of Natural Resources
2 Martin Luther King Jr. Drive,
Suite 1352 East
Atlanta, Georgia 30334
Michael Roy
404.656.6532

Architect/Engineer

Rule Joy Trammell + Rubio, LLC
300 Galleria Parkway #740
Atlanta, Georgia 30339
Scott Norman
770.661.1492

Start Date

October 2015

Completion Date

January 2017

Contract Amount

\$3.8 Million

Awards

2017 AGC Build Georgia Awards First Place



Building for Generations

GA Tech Task Order Projects

Atlanta, Georgia



J.M Wilkerson Construction Co., Inc. was selected as one of the on-site Task Order Contractors for GA Tech in Atlanta, GA.

JMW provides Hardscape / Landscape / Utility Services for the various projects, as needed. The Task Order Contractor also provides cost estimates and cost evaluation, value engineering recommendations, design analysis, constructability reviews, technical input on methods of construction, materials, details, and subcontractor bidding packages. The delivery method per job is lump sum. The scope of work includes, but not be limited to, demo, repaving, renovations, handrail installation, sidewalks, irrigation, concrete construction and streetscapes.

Some of the projects completed are as follows:

- 8th St Apt Temp Fence, Cap Irrigation & Courtyard Replacement - Phases I and II
- Woodruff Handrails
- GT Microgrid
- Cloudman-Howell-Harrison Generator Replacement
- Smith-Brown Generator Replacement
- 2019 Duckbank & N5 Cable Replacement
- CRC Parking Deck Repairs
- Couch Stair Repairs
- Center Street Emergency Sewer Line Repair

Client

Board of Regents of the University System of Georgia By and on Behalf of Georgia Institute of Technology
Facilities Design and Construction
151 Sixth Street NW
Atlanta, Georgia 30332
Jerry Young
404.385.7462

Start Date

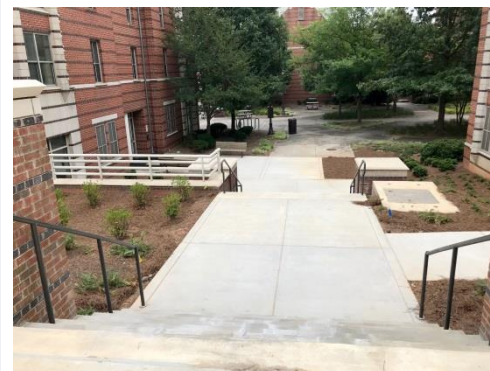
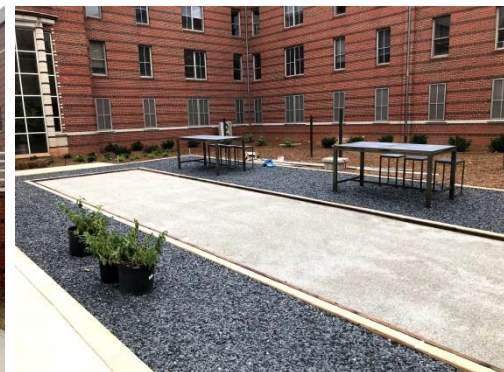
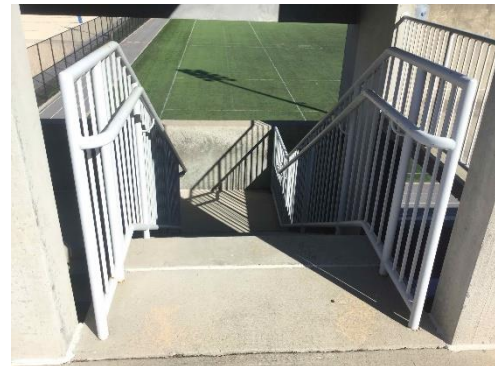
March 2017

Completion Date

Ongoing

Contract Amount

Varies - Currently upwards of \$1.4 million



Building for Generations

J.M. Wilkerson Construction Co., Inc. is serving as the general contractor for over 45 miscellaneous interior and exterior projects at Georgia Gwinnett College in Lawrenceville, GA. The following are some of the projects completed by JMW:

GGC Bursar's Office, Building B Access Platforms, Room A1300 Renovation, Building B Cart Shed Concrete, FERPA Compliance Dividers, President's Office, Concrete Cart Path, Building F Mirror Replacement, Building F Weight room Wainscoting, Theatre Platform Concrete, Sidewalk Improvements, Building F Doors and Partitions, Building A Classroom Renovations, Building A, Suite 1520 Renovation, Drainage Improvements, Cafeteria Chair Rail, Paneling in Presidents Office, Building F Roof Insulation, Tennis Court Concrete Coating, Locker Installation, Building B & L Sidewalks, Steel Bollards, Window Flashing Repair, Bike Racks, Pool Deck Resurface, Fitness Center Remodel, ADA Concrete Ramps, H1 Lab Renovation, Legal and Diversity Suite, Building E Student Mailroom Reno, Building I Exterior Envelope Siding Demo & Repair, Tennis Complex Renovation, Pull up Bars, Building P Sidewalk and Awning, Building D Sidewalk & Rails, Basketball and Volleyball Courts and Gravel Lot Improvements.

Client

Georgia Gwinnett College
 1000 University Center Lane
 Lawrenceville, Georgia 30043
 Nathan Carpenter
 678.407.5819

Start Date

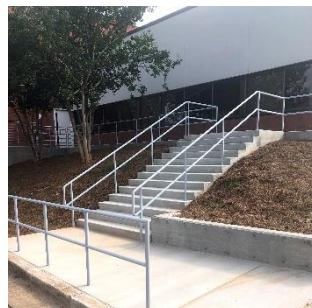
May 2015

Completion Date

Ongoing

Contract Amount

Totaling Approximately \$800,000.00+



J.M. Wilkerson Construction Co., Inc. is serving as the general contractor for miscellaneous task order projects at Kennesaw State University in Kennesaw and Marietta, GA and Kennesaw, GA.

The following are some of the projects under construction / completed by JMW:

KSU Multi-Purpose Room Renovation

Client

Kennesaw State University - Marietta
FAC Design & Construction Services
601 Chamblee Way
Room F-154, MD 9030
Marietta, GA 30060
David Hilker - 470.578.5022

Architect

Pond
3500 Parkway Lane, Suite 500
Norcross, GA 30092
Doug Hannah - 678.336.7740

Start Date

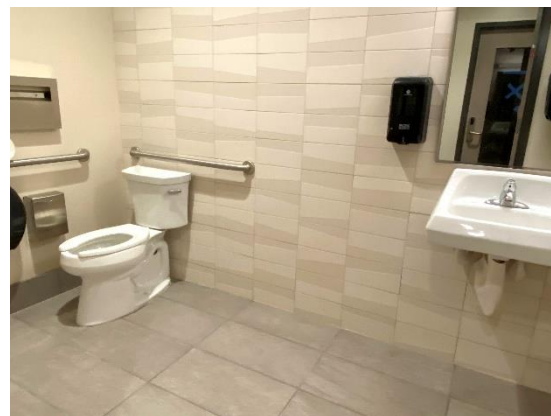
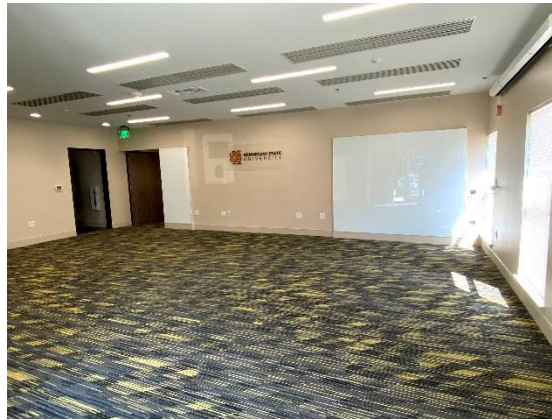
June 2019

Completion Date

Ongoing

Contract Amount

Totaling Approximately \$376,000.00+



Ponce City Market Service Projects

Atlanta, Georgia



J.M. Wilkerson Construction Co., Inc. has completed many projects at Ponce City Market in Atlanta, GA. starting in 2015. These service projects are requested on an on-going basis.

Below is a partial list of completed projects:

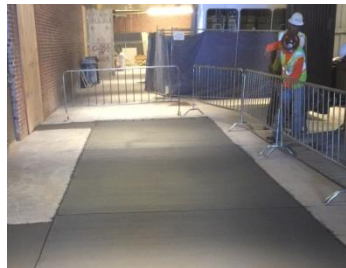
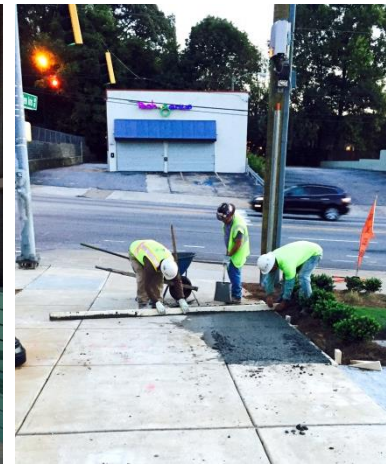
- Storm Drain Modifications at Lower Level of Parking Deck
- PCM Service Building Electrical Repair Support Work
- PCM Shed N End Remaining Work
- PCM Service Building Plaza Drainage
- Dumpster Compactor Pad
- Waterproofing Injection @ SB
- Mirrors @ Parking Garage
- Misc. Plumbing Repairs
- Data in C-120 Space (Retail 103-106)
- Drywall Painting & Patching
- New Walls in Retail Space 103-104
- Repair Water Damaged Units (3) (T&M)
- Missing Shaftwall Material & Added Panels
- Plumbing - Reconfig Waterline in C101
- New Storage Room (Retail 101) & New Doors in 101, 104 & 105
- Items #4 - Level Floor in E178 Space
- Misc. Painting & Drywall Repairs for Greystar
- Property Management
- Switch Out Smoke Detectors in Each Unit
- Caulking in Binders Space
- Greystar PCM - New Door @ Eastside LL Lobby
- Add Emergency Call Station & Power Supply
- PCM Concrete Islands & Bollard Install in PCMSB
- PCM Add Temp Lighting
- PCM Suite S11 Pourback Trenches
- Loading Dock Extension
- Concrete Repairs @ Service Building
- PCM Sidewalk Repairs @ Glen Iris
- PCM Benches
- PCM Add 15 Tables to Benches @ Shed
- PCMSB Misc. T&M
- PCM Add Bench @ Food Hall
- Haul off Dirt @ Shed
- Screens at Shed Openings
- Contaminated Soil Removal T&M
- Loading Dock Repair @ SB Compactor
- PCM Service Building Leak Repair T&M
- PCM Shed Steel Removal T&M
- PCM Bellline Shed Egress Grille T&M

Client

Jamestown, LP
675 Ponce de Leon Ave, NE, 7th Fl.
Atlanta, GA 30308
Steve Simmons - Vice President
404.885.7325

Contract Amount

Totaling Approx. \$500,000.00



Building for Generations

Ponce City Market Service Building

Atlanta, Georgia



JM. Wilkerson was selected to provide construction services for the adaptive-re-use of the old Sears Service Building located on the corner of North Ave and Glen Iris in Atlanta, GA.

The project involved the conversion of an old parking structure and service center into a new and vibrant retail project adjacent to the Ponce City Market building. With over 52,000 sq. ft. of retail and 48,000 sq. ft. of parking, this project helps to anchor the corner of the Ponce City Market site. Additionally, the project included the shell space for a 23,000 sq. ft. urban school. The service building's scope of work included the restoration and placement of new concrete structures as well as the finishing out of sales centers and retail locations along North Ave. Other portions of the retail areas were delivered as shell space. Waterproofing of existing basement walls and the installation of a catchment basin was also completed. This was a complex project requiring completion while new tenants opened their companies and were active for business. Additionally, the project was completed as part of the total Ponce City Market package requiring extensive coordination with multiple teams.

Client

Jamestown, LP
999 Peachtree Street, Suite 1925
Atlanta, GA 30309
Jim Irwin - Senior Vice President
404.312.1410

Architect/Engineer

Surber Barber Choate & Hertlein
Architects
1776 Peachtree Street NW, Suite 700
South, Atlanta, GA 30309
Dennis Hertlein
404.872.8400

Start Date

November 2013

Completion Date

December 2014

Contract Amount

\$8,581,176



Building for Generations

Paideia School - High School Building Renovation

Atlanta, Georgia



J.M. Wilkerson Construction Co., Inc. served as the general contractor for the Paideia School High School building renovations in Atlanta, GA.

JMW replaced six existing HVAC units and install new controls in the High School Building. There was also miscellaneous office and classroom renovations. JMW converted an existing classroom into a chemistry lab (which included fabricate millwork with lab grade counter tops, installing gas piping, new ventilation and exhaust system, new plumbing for corrosive chemicals, installation of acid tank and emergency eye wash/shower).

Client

Paideia School
1509 S. Ponce de Leon Avenue
Atlanta, GA 30307
Laura Hardy
404.270.2300

Start Date

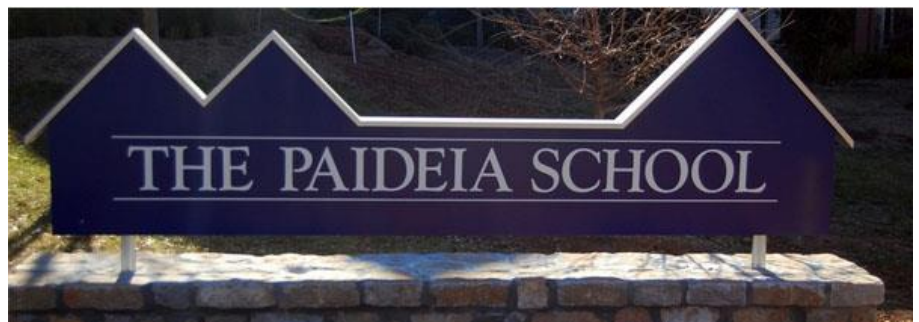
June 2014

Completion Date

August 2014

Contract Amount

\$386,905



Building for Generations

Paideia School Learning Center & High School Library Renovations

Atlanta, Georgia



J.M. Wilkerson Construction Co., Inc. served as the general contractor for the Paideia School Learning Center & High School Library Renovations in Atlanta, GA.

This renovation project consisted of the partial renovation of the 2,400 sq. ft. high school library, located on the 1st floor of the high school building. The scope of work included converting library space into a learning center and meeting room. Work included HVAC and electrical work to support the program. New finishes were installed throughout these spaces.

Client

Paideia School
1509 S. Ponce De Leon Ave NE
Atlanta, GA 30307
Laura Hardy
404.270.2300

Architect/Engineer

Dolson Design Studio
360 Highlands Trace
Roswell, GA 30075
Miriam Dolson
404-697-8538

Start Date

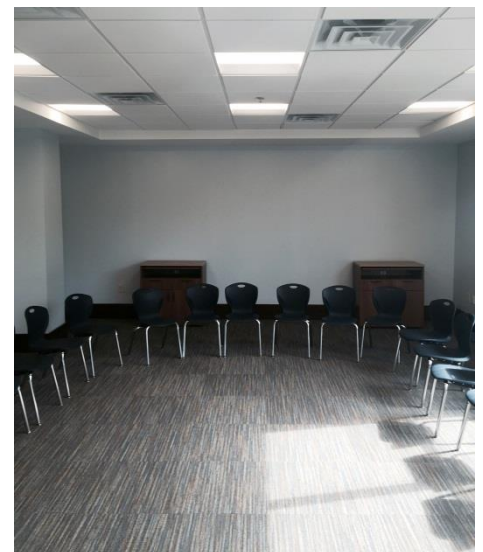
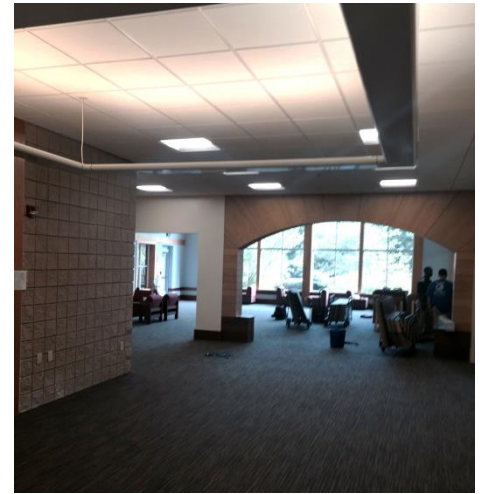
June 2015

Completion Date

August 2015

Contract Amount

\$ 295,157.00



Building for Generations

J.M. Wilkerson Construction Co., Inc. was selected as the General Contractor for renovations to the Doubletree Hotel Buckhead, located in Atlanta, GA.

Renovations will take place throughout the entire facility in ongoing phases. Phases 1 and 2, which are now complete, of this complex project included total renovations to the lobby, bar, sales center and public spaces. Phase 3, included the total renovation of 230 guest rooms and corridors. The complex renovation of this urban hospitality project took place while the facility remained open, occupied and ready for business. JMW understands the importance of maintaining a low profile during renovations in a hotel and work hard to maintain a professional environment for all visiting guests.

Client

Consilium Partners, LLC
Jill West
720.675.8234

Architect

Ai3 Architecture
Patrick Johnson - Principal
404.223.3304

Start Date

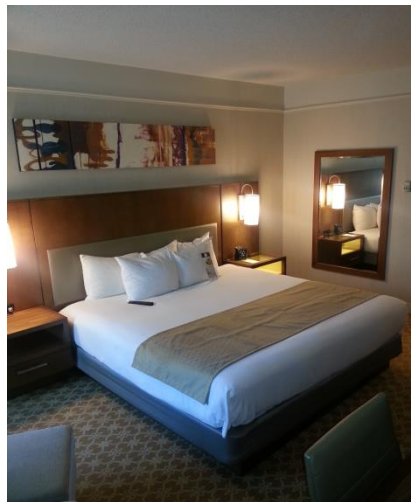
May 2012

Completion Date

April 2013

Contract Amount

\$1.2 Million



J.M. Wilkerson Construction Co., Inc. served as the general contractor for DeKalb County, replacing their old transfer station facility in Decatur, GA.

The scope of work on this project included 30 acres of extensive site work, the addition of 2 retention ponds, the demolition and replacement of the existing incinerator, including a pre-engineered type II-B metal building of approximately 40,000 sq. ft., a 2-story class "A" office / admin building with structural steel frames of approximately 27,500 sq. ft. and the construction of a scale house and 1 story maintenance facility. All structures have slab on grade foundations. This project was finished 4 months ahead of schedule.

Client

DeKalb County, Georgia
Department of Sanitation
Billy Malone
404.294.2927

Architect/Engineer

HDR Engineering
Tim Cooper
678.794.4182

Start Date

August 2007

Completion Date

December 2008

Contract Amount

\$24.3 Million

Awards

2009 First Place Build GA Award
2009 First Place Sustainability
Building Practice Award, General
Contractors (AGC)
2008 First Place Award from the
American Concrete Institute (ACI)



Building for Generations

J.M. Wilkerson Construction Co., Inc. was selected to provide general construction services to Lockheed Martin in Marietta, GA for the construction / renovation of their new dining and events spaces located in the B95 Building.

This challenging project included the creation of a 3,200 sq. ft. kitchen and serving area, as well as an events space capable of holding over 500 people. This space is used daily to feed the employees at Lockheed, as well as for presentations and formal functions. Full Audio/Visual systems were installed, including large automatic screens, sound systems, computer networking and digital wayfinding, along with notices to employees. Included in this project were additional renovations for meeting and corridor finishes.

Client

Lockheed Martin Aeronautics
Tom Deckbar
770.494.2513

Architect

Smoak Designs
Steve Smoak
770.955.2800

Start Date

July 2007

Completion Date

August 2007

Contract Amount

\$2.7 Million



Westminster School Innovation Space

Atlanta, Georgia



J.M. Wilkerson Construction Co., Inc. served as the general contractor for the Westminster School Innovation Space in Atlanta, GA.

JMW was awarded the renovation and conversion of the 4,300 sq. ft. Westminster School Innovations Space. The existing classroom areas were demolished and reconfigured into new larger classrooms for the use of a space/robotics lab. The scope of work included, but was not limited to, selective demo of metal studs/gyp framing, acoustical ceiling tile and grid demo of doors and flooring. Minor structural modifications along with new wall partitions, doors operable storefront windows, lights, floor finishes, siding ceilings, ductwork, cabinets and mill work were also completed.

Client

The Westminster Schools
1424 West Paces Ferry Road
Atlanta, GA 30303
Tammy Maynard
770.364.0646

Architect/Engineer

Gensler
999 Peachtree Street NE, Suite 1400
Atlanta, Georgia 30309
James Krygel
404.507.1036

Start Date

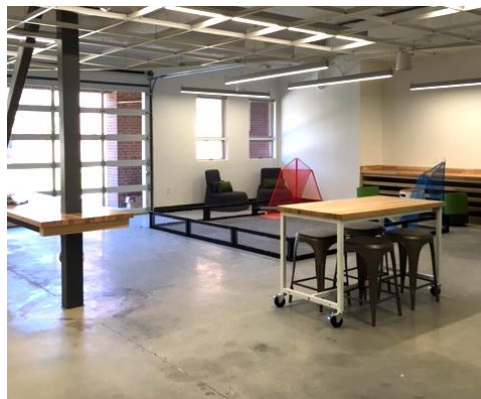
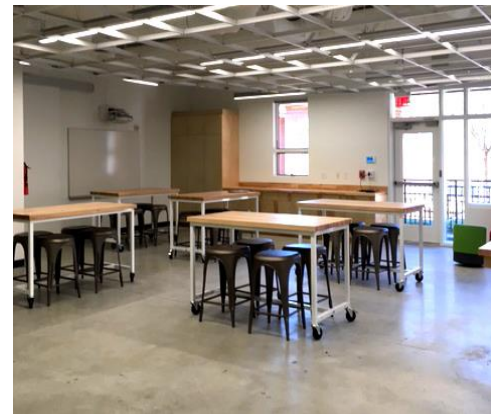
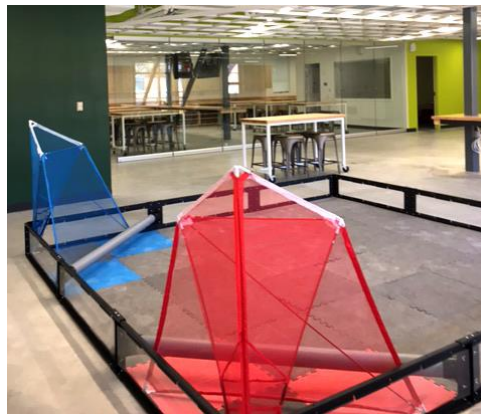
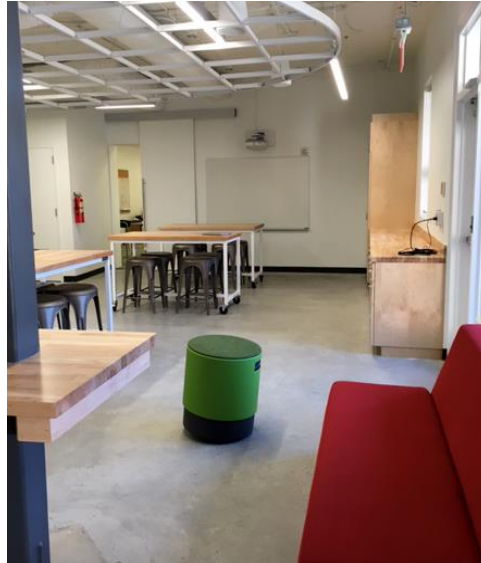
June 2015

Completion Date

September 2015

Contract Amount

\$448,600.00



Building for Generations

J.M. Wilkerson Construction Co., Inc. was the General Contractor for the addition and renovation of Cobb County's Mountain View Library located in Marietta, GA.

The scope of work included the renovation of 16,000 sq. ft. to the main library and the addition of a 4,000 sq. ft. children's area. This complex renovation was completed in phases while maintaining the active operations of the library. Our team provided either the upgrades or total renovations to all public spaces, as well as office and operations areas. Additional project scope consisted of the reconfiguration of the entire site with new retaining walls, sidewalks, parking and site lighting.

Client

Cobb County, GA
Allen Kronenberger
770.528.2187

Architect

The Howell Group
Billy Howell
678.354.5611

Start Date

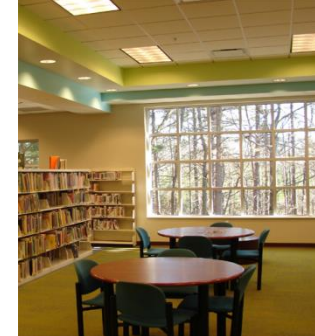
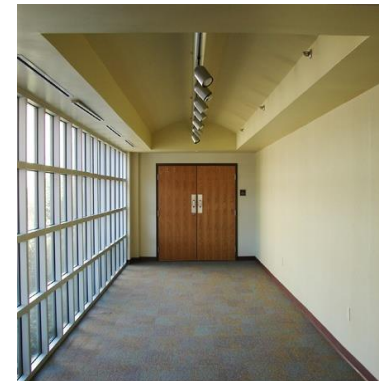
April 2008

Completion Date

December 2008

Contract Amount

\$2 Million



Building for Generations

J.M. Wilkerson Construction Co., Inc. was selected as the Design / Build Contractor for the City of Hartwell's City Hall, Police Department and Jail facility in Hartwell, GA.

Partnering with JMW, Piper O'Brien Herr Architects provided all the necessary design and engineering for the project. The 19,450 sq. ft., 3 story brick and stone facility provides a new home for the city's central governmental functions, police and jail services. The facility will also be used by the community for its City Council Chamber Meetings, as well as the city court room. The state of the art jail facility holds up to 12 inmates. The Police Department includes administrative offices, dispatch, records and training facilities. The project was completed on time and within the budgets set by the owner.

Client

The City of Hartwell, GA
456 East Howell Street
Hartwell, GA 30643
David Aldrich - City Manager
706.376.4756

Architect

Piper O'Brien Herr Architects
3000 Royal Boulevard South
Atlanta, GA 30022
Anthony Turpin- Principal
770.569.1706

Start Date

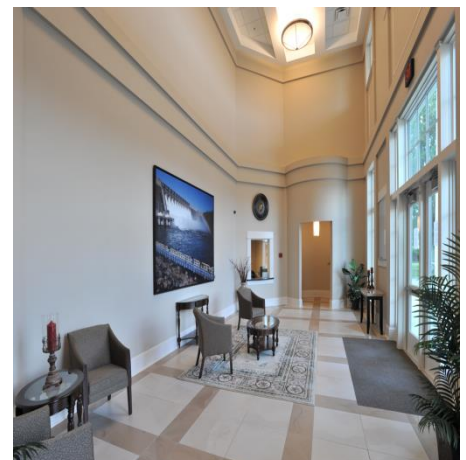
October 2011

Completion Date

August 2012

Contract Amount

\$4 Million



Building for Generations

J.M. Wilkerson Construction Co., Inc. was selected as the general contractor for the John H. Sr. and Ethel C. Bennett History Museum, located on the campus of Reinhardt College in Waleska, Georgia.

The Museum is modeled after Native American dwellings similar to those once found in the north Georgia area. The Museum consists of an Iroquois longhouse between two Mississippi mound buildings. The 50 foot longhouse was designed to resemble the bark once used to build these dwellings. African tile was used to resemble a dirt floor. Poles of Southern yellow pines were used to hold up the 25 foot arched ceiling. The Mississippian houses were built with stucco to resemble the “wattle and daub” technique once used in their construction. The museum houses several permanent displays with gallery space available for traveling exhibits. The museum has classrooms, laboratories and a 100 seat state of the art theater.

Client

Reinhardt College
7300 Reinhardt College Pkwy.
Waleska, GA 30183
JoEllen Wilson
770.720.5545

Architect

Reynolds Architect
315 Academy Street
Gainesville, GA 30501
Garland Reynolds
770.531.0100

Start Date

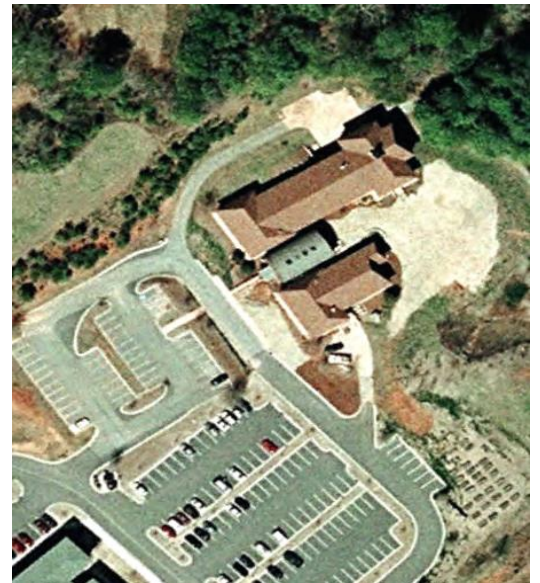
July 1994

Completion Date

June 1995

Contract Amount

\$1.8 Million



Building for Generations

J.M. Wilkerson Construction Co., Inc. served as general contractor for the William W. Fincher Jr. and Eunice L. Fincher Visual Arts Center located on the Reinhardt College Campus in Waleska, GA.

The Visual Arts Center is an Italianate building with stucco exterior and front and rear porticos. It consists of 7,000 sq. ft. of finished space and includes a computer lab/photo studio, a printmaking and photo studio, a drawing studio and a painting studio. The studios, faculty offices, photographic darkroom and support facilities are positioned around two display galleries. The "loggia grande" is a replica of the main hall of the famed Villa Forni-Cerato near Venice, Italy, providing an area for traveling art exhibitions. The William W. Fincher Jr. and Eunice L. Fincher Visual Arts Center was dedicated in 1998.

Client

Reinhardt College
7300 Reinhardt College Pkwy.
Waleska, GA 30183
JoEllen Wilson
770.720.5545

Architect

Reynolds Architect
315 Academy Street
Gainesville, GA 30501
Garland Reynolds
770.531.0100

Start Date

July 1994

Completion Date

June 1995

Contract Amount

\$710,000



Building for Generations

J.M. Wilkerson Construction Co., Inc. served as the general contractor for this renovation and addition project in Atlanta, GA.

The scope of work for this project included the interior demolition of an existing two story office space and the construction of new interiors to accommodate a 22,000 sq. ft. private school. The project featured the addition of a new exterior stairway, state of the art classrooms, laboratory space and performing arts room with AV functions throughout. This project incorporated unique interiors, utilizing bright colors, storefront garage door systems for wall partitions and custom millwork designed to be used as part of the performing arts program. Integration of the new exterior stair to the existing building allowed the teams to connect the two pre-existing floor plates unifying the overall flow of the student population.

Client

Atlanta New Century School
Greg Morse
404.471.2688

Architect

Perkins & Will
Katie Pedersen
404.873.2300

Start Date

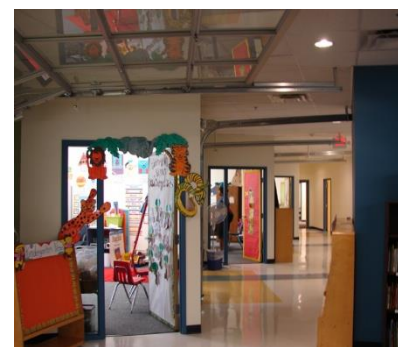
September 2007

Completion Date

April 2008

Contract Amount

\$1.6 Million



Mixed-Use, Multi-Family Experience



Building for Generations

J.M. Wilkerson Construction Co., Inc. was selected as the General Contractor for the ground up construction of 400 Bishop in Atlanta, GA.

400 Bishop is a 10 story post-tensioned concrete structure that includes (6) levels of multi-family residential - 274 units over (4) levels of parking. The building also contains 5,800 sf live/work space, 2 elevated courtyards, swimming pool and rooftop patio, totaling 382,500 gross sf.

Client

Middle Street Partners, LLC
146 William Street, STE 100
Charleston, SC 29403
Derek Owen
404.245.5039

Architect/Engineer

Brock Hudgins Architects
1075 Brady AVE. NW
Atlanta, GA 30318
Ben Hudgins
770.789.7617

Start Date

September 2022

Completion Date

January 2025

Contract Amount

\$73,232,405



Building for Generations

J.M. Wilkerson Construction Co., Inc. was selected as the General Contractor for ground up construction of Arden Apartments in Atlanta, GA.

Arden Apartments will consist of a new (4) story, 58 unit multi-family residential building, with 1,305 sq. ft. for future tenant use. This will be wood framed construction with surface parking.

Unit designs will include a total of 3 base unit types with required variations, based on skin conditions. Approximately 4,000 sf of amenities and laundry facility will be provided under the base building structure. There will be a stand-alone gazebo, mail kiosk and trash enclosure.

Client

Arden Family I, LP
3715 Northside Parkway, NW, Building 200, STE 175
Atlanta, GA 30327
Max Kovtoun
404.587.9119

Architect/Engineer

Dwell Design Studio, LLC
8200 Greensboro Drive, STE 650,
McLean, VA 22102
Steve Moriak
703.328.3501

Start Date

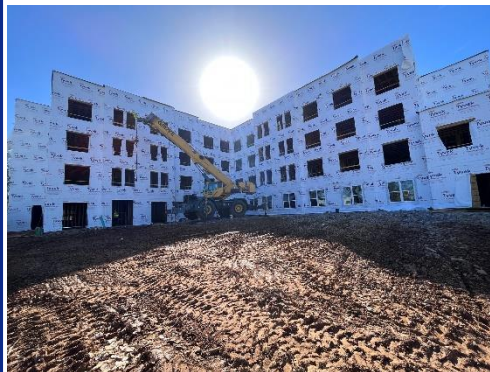
August 2022

Completion Date

December 2023

Contract Amount

\$12,819,070



Hightower Manor Redevelopment

Atlanta, Georgia



J.M. Wilkerson Construction Co., Inc. was selected as the General Contractor for redevelopment Hightower Manor High-rise in Atlanta, GA.

Hightower is a 7-story, 129 unit senior and assisted living housing facility, that we have had experience in upgrading over the years. The interior scope of work includes new flooring, drywall, paint, lighting, millwork, interior and entry doors, kitchen cabinets and appliances throughout. It also includes upgrades to MEP and Elevators.

The exterior scope consists of the demolition and replacing the skin, roof, canopy, entry vestibule, patio, lighting, windows and guardrails/handrails. It also includes excavating along portions of the building applying new below grade waterproofing. consists of to the basement, first floor and terrace levels, as well as, site and exterior improvements. Re-roofing, HVAC, plumbing and electrical upgrades concluded our updates.



Client

Columbia Residential
1718 Peachtree Street NW
Suite 684 South Tower
Atlanta, Georgia 30309
Betty Gomez
404.456.7556

Architect/Engineer

Goode Van Slyke Architecture
409 John Wesley Dobbs Avenue
Atlanta, Georgia 30312
Wendy Hurley
404.523.5525 ext. 125

Start Date

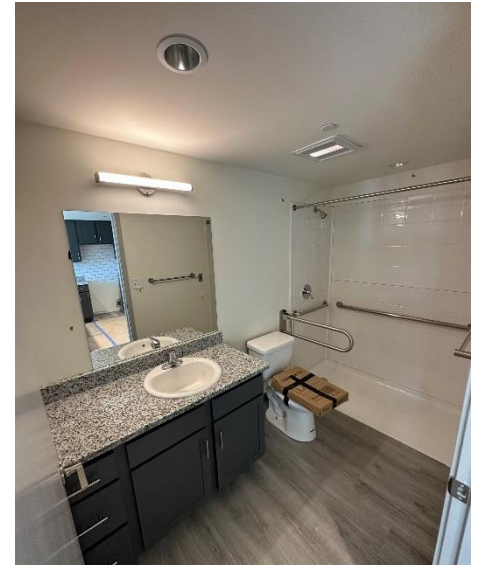
March 2022

Completion Date

September 2023

Contract Amount

\$19,743,896



Building for Generations

1015 Boulevard

Atlanta, Georgia



J.M Wilkerson Construction Co., Inc. was selected by Middle Street Partners as their General Contractor for the 1015 Boulevard project located just south of the Zoo and Grant Park in Atlanta, GA.

This new 233,791 square foot mixed use development includes a 2 level basement parking excavation with 5 levels of wood frame residential construction on top. There is 5,000 square feet of retail space as well as building access along this newly developing West Side Beltline trail that will create new exciting public spaces.

This creative plan incorporates two amenities courts, one with a pool and club room break out space and a second developed as a motor court suitable for drop-off and pick-up of urban ride share teams. With 323 units outlined in a mixture of unit sizes, this project will have a great level of activity helping to anchor its place along Boulevard and the Beltline Trail. The JMW teams are targeted to complete this project in early 2023.

Client

Beltline and Boulevard Owner, LLC
146 Williman Street, Suite 100
Charleston, SC 29403
Derek Owen
404.245.5039

Architect/Engineer

Brock Hudgins Architects, LLC
1075 Brady Ave., NW
Atlanta, GA 30318
Ben Hudgins
404.213.5271

Start Date

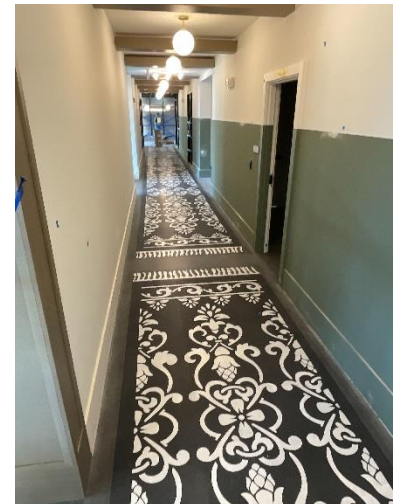
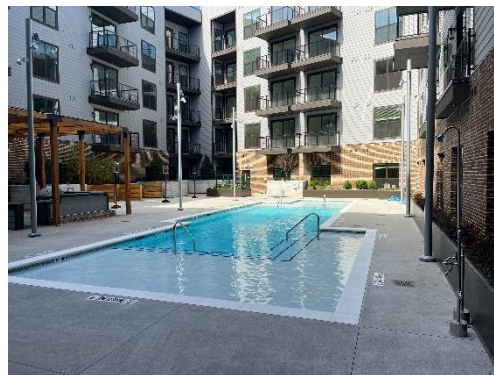
December 2020

Completion Date

July 2023

Contract Amount

\$53,624,737



Building for Generations

J.M Wilkerson Construction Co., Inc. was selected as the General Contractor for the Intrada Westside project in Atlanta, GA.

The scope of work entails the demolition of an existing structure, re-grading of the site and the new construction of a 4 story apartment building with a partial basement that contains 143 total units. The first floor contains an approximately 9,000 square foot incidental leased space unfinished “gray box” with the intent for the leased space to infill as a mercantile. Each floor contains a community space and laundry room. The first floor contains a community room along with leasing offices and restrooms. There will be two elevators and 3 stair towers serving the residential portion of the building, two stair towers are enclosed and one stair tower is exposed to the exterior. The project in entirety is classified as a VA Building and is sprinkled conforming to NFPA 13. It will also adhere to DCA regulations.

Client

VG DLH Development, LP
305 W. Commercial Street
Springfield, MO 65803
Sharon Guest
404.316.0631

Architect

Vecino Design, LLC
305 W. Commercial Street
Springfield, MO 65803
Layne Hunton
417.224.4701

Start Date

March 2021

Completion Date

February 2023

Contract Amount

\$25,893,563.83



Building for Generations

Avondale Hills Apartments

Decatur, Georgia



J.M Wilkerson Construction Co., Inc. was selected as the General Contractor for the Avondale Hills Apartments project in Decatur, GA.

This project consists of the ground up construction of 240 apartment units, 5 stories wood frame over post-tensioned slabs, TPO, asphalt shingles and standing seam metal roofing, 256,500 SQ FT. with 5 story pre-cast concrete parking garage including 340+/- parking spaces.

Site work includes grading, installation of site utilities, retaining walls, and asphalt parking lot. Site utility work includes storm drains, sanitary sewer, and water. Retaining walls are both modular construction and cast-in-place concrete walls.

Project also includes clubroom, swimming pool, and outdoor amenity area located within the apartment building courtyard, to include bocci ball court, TV area, and grill stations.

Client

Inland Atlantic Development Corporation
1201 Peachtree Street NE, 400 Colony Square, STE 1210
Atlanta, GA 30361
John DiGiovanni
404.963.8140

Architect/Engineer

Ora Architecture
19 W. Hargett Street, STE 600
Raleigh, NC 27601
Andrew Iatridis
919.602.6293

Start Date

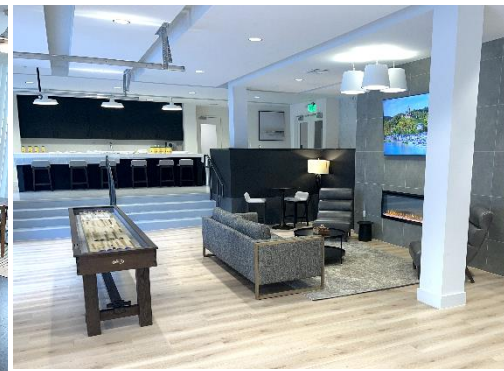
October 2020

Completion Date

December 2022

Contract Amount

\$39,603,418



Building for Generations

London Townhomes Renovation

Atlanta, Georgia



J.M Wilkerson Construction Co., Inc. was selected as the General Contractor for the London Townhomes project in Atlanta, GA.

This scope includes the renovation of existing 200 units in west Atlanta. This townhome community was built in 1968. This is an interior and exterior renovation. The work will include asbestos abatement, new HVAC equipment, plumbing fixtures, electrical, cabinetry, interior doors and window treatments.

It also includes the renovation and addition to the existing leasing office, which includes a new fitness center, art room, children's room, community laundry room and centralized mail kiosk.

Exterior work includes roof replacement, fiber cement siding, windows and doors. We're also adding a community playground, pavilion and gazebo.

Client

TBG London Townhomes, LP
Marsh Creek Village - 6780 Roswell Road
NE, Suite 200
Atlanta, GA 30328
Torian Priestly
404.213.6524

Architect/Engineer

Pimsler Hoss Architects, Inc.
455 Glen Iris Drive NE, Suite C
Atlanta, GA 30308
Randy Pimsler
404.875.1517

Start Date

September 2020

Completion Date

January 2023

Contract Amount

\$19,689,233



Building for Generations

Bethel Ministries Renovation

Atlanta, Georgia



J.M Wilkerson Construction Co., Inc. was selected as the General Contractor for the Bethel Ministries Renovation in Atlanta, GA.

The scope of work included minor alterations of the existing space for the current occupant. This space is located next to the historic Bethel Church and the newly renovated Bethel Tower, which JMW completed in 2020.

The work included selective demolition of interior walls, abatement, paint and patch walls and doors, new flooring, new ceiling tiles, new toilet partitions, new additional bathroom and electrical and mechanical modifications. No work impeded the existing egress.

Client

Bethel Towers Inc.
204 Auburn Ave NE
Atlanta, GA 30303
Marvin Fleming
770.846.8759

Architect/Engineer

Goode Van Slyke Architecture
409 John Wesley Dobbs Avenue
Atlanta, Georgia 30312
James Cain
404.523.5525 ext. 127

Start Date

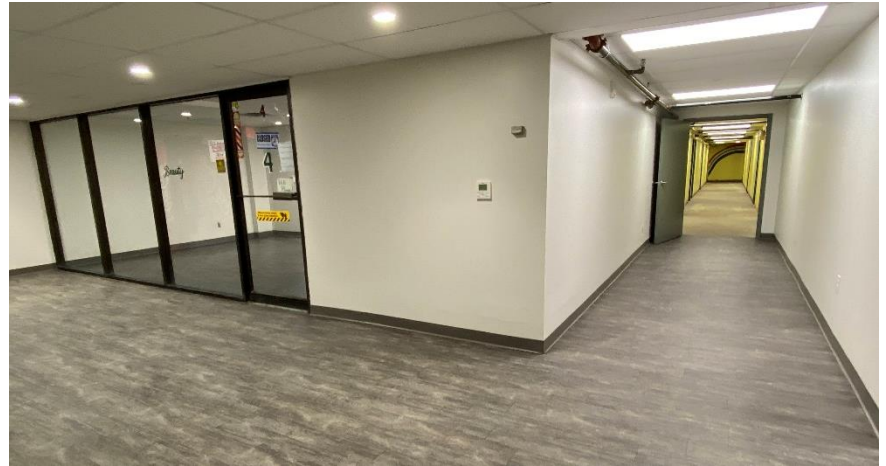
September 2020

Completion Date

December 2020

Contract Amount

\$657,781.00



Building for Generations

J.M Wilkerson Construction Co., Inc. was selected as the General Contractor for the new luxury condominiums Juniper & 5th in Atlanta, GA.

J5 is located on a 1.8-acre site, on Juniper Street in Midtown. J5 is the first new luxury condominium of its kind in over a decade. Within the building, there will be a total of 150, one and two bedroom condominiums. It will also feature 2 levels of partially underground parking, with 2 levels having direct access to the street, wood framed structure on a concrete podium, tiered rooftop terraces, courtyards and a pool.

The amenities will include two landscaped courtyards, one with a pool and adjacent club room and fitness center, conference rooms as well as a rooftop club room with a deck overlooking the skyline.

Client

Juniper & 5th Ventures, LP
5950 Live Oak Parkway, Suite 320,
Norcross, GA 30093
Eric Xue
404.731.8732

Architect/Engineer

Smith Dalia Architects, LLC
621 North Avenue, NE, Suite C-140,
Atlanta, GA 30308
Greg Cross
678.365.4155

Start Date

August 2018

Completion Date

April 2020

Contract Amount

\$46,448,365



Bethel Towers Apartments

Atlanta, Georgia



J.M Wilkerson Construction Co., Inc. was selected as the General Contractor for the renovation of the Bethel Tower Apartments in Atlanta, GA.

This Auburn Avenue tenant renovation project included the complete residential tower renovations including all 182 units, corridors and common spaces. All the windows were replaced as well as improvements to the parking deck, mechanical room, exterior stairs and common bathrooms on P1. It also included mechanical, plumbing, electrical and life safety upgrades. This project also created new amenity spaces, including a new exercise room, playground and computer room.

Bethel Tower Apartments is for low income families and was DCA compliant.

Client

TBG Bethel Towers I, LP
6780 Roswell Road, Suite 200
Atlanta, GA 30328
LaNorris Nixon
678.469.2460

Architect/Engineer

Goode Van Slyke Architecture
409 John Wesley Dobbs Ave.
Atlanta, GA 30312
Leisa Hardage
404.523.5525 ext. 126

Start Date

July 2018

Completion Date

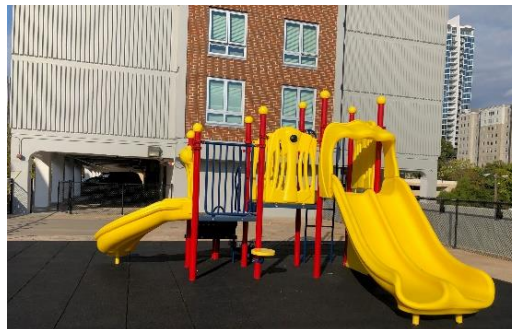
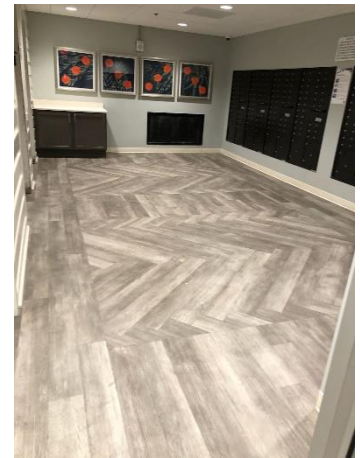
June 2020

Contract Amount

\$16,692,503

Awards

2020 First Place Build GA Award



Building for Generations

664 Seminole Apartments

Atlanta, Georgia



J.M Wilkerson Construction Co., Inc. was selected as the General Contractor for 664 Seminole Apartments, which is Phase II of the 675 N. Highland Apartments in Atlanta, GA.

This project is a new 4 story mixed-use complex, with the first level acting as a retail shell with lobby and 3 levels of 39 unit apartments. It is located adjacent to phase one parking deck. Sitework construction consisted of grading, utility work, storm drain and landscaping. Building construction consisted of concrete spread footers, structural steel on 1st level with wood framing on next 3 levels, gypcrete floor system, zip system sheathing / waterproofing, hardie board siding and brick veneer.

Client

OI-675 PII, LLC c/o Origin Investments
221 N. LaSalle Drive, Suite 1000
Chicago, IL 60654
Kyle Verhasselt
312.635.3701

Architect/Engineer

Brock Hudgins Architects
1075 Brady Ave. NW
Atlanta, GA 30318
Ben Hudgins
404.213.5271

Start Date

January 2018

Completion Date

December 2018

Contract Amount

\$6,350,000



Building for Generations

Wheat Street Towers

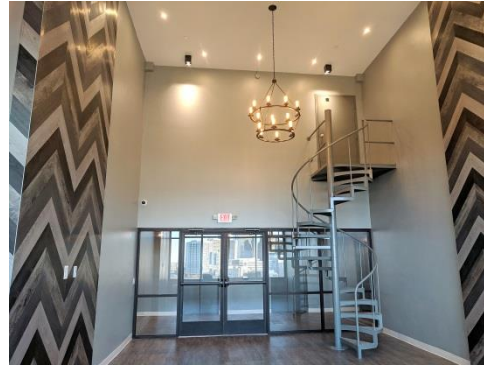
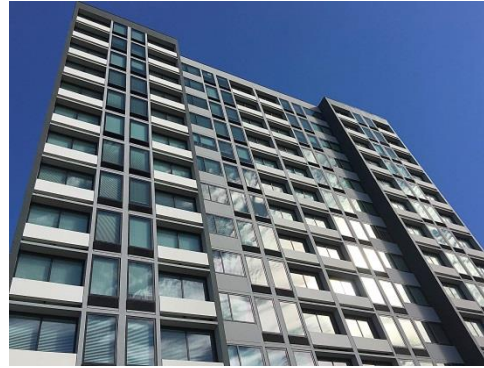
Atlanta, Georgia



J.M. Wilkerson Construction Co., Inc. was selected as the General Contractor for the renovations of the Wheat Street Towers in Atlanta, GA.

This project is a renovation of an existing 208 unit, 14 story apartment tower located on Auburn Avenue, in the Martin Luther King Jr. historic district of Atlanta. The renovation is targeted for elderly housing. There are no building height modifications and no modifications to the existing structural system.

Interior work included the renovation of the units and common spaces, replacing HVAC equipment, water piping and fixtures, interior finishes, window replacements, electrical wiring and fixtures. Exterior work was limited to window replacement, painting of the existing façade, new roof and adding a trellis to the west façade. Site work was limited to resurfacing the parking areas, providing a new dumpster pad, new fencing, new site furnishings, new generator and landscaping. No grading was required. This was a HUD project and all the protocols were executed according to HUD.



Client

Wheat Street Senior, LP
6780 Roswell Road, Suite 200
Atlanta, GA 30328
LaNorris Nixon
404.671.3781

Architect/Engineer

Tunnell-Spangler-Walsh & Associates (TSW)
1389 Peachtree Street, Suite 200
Atlanta, GA 30309
Jerry Spangler, AIA
404.873.6730

Start Date

June 2017

Completion Date

February 2019

Contract Amount

\$17,083,109

Awards

2019 First Place Build GA Award

Building for Generations

Juniper & 10th High-Rise Renovation

Atlanta, Georgia



J.M Wilkerson Construction Co., Inc. was selected as the General Contractor for the renovations of the Juniper & 10th high-rise in Atlanta, GA.

This Senior Housing rehab is located on the corner of Juniper and 10th Ave., right in the heart of Midtown, Atlanta. The very tight site is less than .66 of an acre and includes a 14 story, 149 unit building totaling about 101,000 square feet of heated space. The scopes covered all public spaces, dwelling units, offices and site amenities. Additional project scope included the removal and replacement of the building's exterior skin, windows and all roofing materials. The new exterior skin and wall system was comprised of a new 6" metal stud system faced with a fluid applied water proofing and EIFS skin. All building systems were updated throughout with the removal and replacement of all Mechanical, Electrical and Plumbing systems. Life safety upgrades included new Fire alarm, sprinkler system, pressurizations of stairwells and back-up generators. Site and infrastructure work surrounding this site involved storm water detention and new exterior public spaces.

Client

Columbia Residential
1718 Peachtree Street, Suite 684 S Tower
Atlanta, GA 30309
Betty Gomez
404.419.1439

Architect/Engineer

Surber Barber Choate & Hertlein
675 Ponce de Leon Ave., Suite 4400
Atlanta, GA 30308
Tom Little
404.872.8400

Start Date

November 2016

Completion Date

December 2017

Contract Amount

\$16,135,000

Awards

2017 AGC Build Georgia Awards First Place



Building for Generations

Venue Brookwood Apartments

Atlanta, Georgia



J.M Wilkerson Construction Co., Inc. was selected as the general contractor for a new apartment complex located in Atlanta, GA.

The project is located near the intersection of Colonial Homes Drive and Peachtree Road in Atlanta, GA. The project included 249 units and an overall heated SF of 335,599 sq. ft. JMW self-performed the 3-story, 180,000 sq. ft. parking structure. The parking deck has 18,640 CY of concrete with 1,364 tons of rebar. The project also included 3 levels of structured parking (partial below grade; shoring is required) below a level 4 Podium slab; with an Epicore (or similar) structure above to level 11/Roof. The scope of work also included landscape/hardscape as well as a dog spa.

Client

Grayco Partners, LLC
55 Waugh Drive, Suite 500
Houston, TX 77007
Jeff Gray
713.426.2004

Architect/Engineer

Niles Bolton Associates
3060 Peachtree Road NW, Suite 600
Atlanta, GA 30305
Trevor Walker
404.365.7600

Start Date

November 2014

Completion Date

December 2016

Contract Amount

\$ 48,678,000



Building for Generations

Ponce City Market - The FLATS (Adaptive Reuse)

Atlanta, GA



J.M. Wilkerson Construction Co., Inc. was selected as the general contractor for the construction of Ponce City Market in Atlanta, GA.

This project was over 330,000 sq. ft. of new residential apartments, called The FLATS, located inside the west and east towers of the Ponce City Market project. Listed as the largest adaptive re-use project in Atlanta's history, Ponce City Market will restore more than a million sq. ft. of space. JMW's scope includes the construction of 260 residential units, leasing and marketing/sales centers, as well as all interiors, finishes, walls and build-out of the service building and public spaces associated with the residential housing.



Client

Jamestown, LP
999 Peachtree Street, Suite 1925
Atlanta, GA 30309
Jim Irwin - Senior Vice President
404.312.1410

Architect

Stevens & Wilkinson
100 Peachtree St. NW
Suite 2500
Atlanta, GA 30303
Ron Stang - Principal
404.521.6315

Start Date

April 2013

Completion Date

June 2014

Contract Amount

\$25.6 Million

Building for Generations

Tuscaloosa Riverfront Village

Tuscaloosa, Alabama



J.M. Wilkerson Construction Co., Inc. was selected as the general contractor for a new private student housing complex "Riverfront Village" located in Tuscaloosa, AL.

This project included ground-up new construction of (3) apartment buildings, buildings A, B, and C, totaling approximately 289,866 sq. ft. and 192 apartment units with a precast parking deck located within the site. Drilled Caisons/Piers were included at parking deck as well as foundation improvement systems. The exterior consisted of brick (33,000 sq. ft. allowance), cementitious siding/panels and faux stone/precast.

Client

Riverfront Village, LLC
5256 Peachtree Road, STE 135
Atlanta, GA 30341
Judd Bobilin
678.799.8960

Architect/Engineer

The Preston Partnership, LLC
115 Perimeter Center Place
South Terraces, Suite 950
Atlanta, GA 30346
Yi Lo
770.396.7248

Start Date

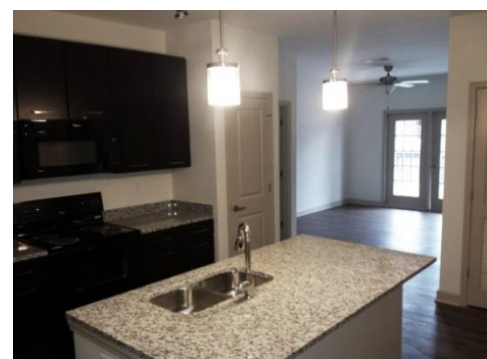
July 2013

Completion Date

November 2014

Contract Amount

\$25,618,532



Building for Generations

The Leonard Apartments

Atlanta, Georgia



J.M. Wilkerson Construction Co., Inc. served as the general contractor for the 301 Memorial Drive Apartments, The Leonard, in Atlanta, GA.

The project included ground-up new construction of (1) apartment building with retail (3,300 sq. ft.), over below grade parking totaling approximately 99,430 gsf. and 85 apartment units -- 126 space parking area below grade.

The project also included full site work package including storm water detention structure, pervious asphalt paving, landscape/hardscape/site furnishings. Structure consists shallow foundations, foundation walls, SOG, and Post Tensioned Podium Slab over parking with 4 levels of wood framed residential above, including a small area of steel framing at retail. Exterior skin consisted of Nichi-Ha at retail level, cementitious siding/panels, and cast stone sills.

Window systems included aluminum storefront, aluminum residential window and sliding glass door systems, gated parking entry. Typical residential finishes, elevators, fire sprinkler, full MEP.

Client

307 Memorial Drive, LLC
950 Joseph E. Lowery Blvd.
Atlanta, GA 30318
Simon Tuohy
404.564.1250

Architect/Engineer

Archetype Design LLC
2300 Windy Ridge Pkwy SE, Suite 200S
Atlanta, GA 30339
Brooks Hall
770.936.0102

Start Date

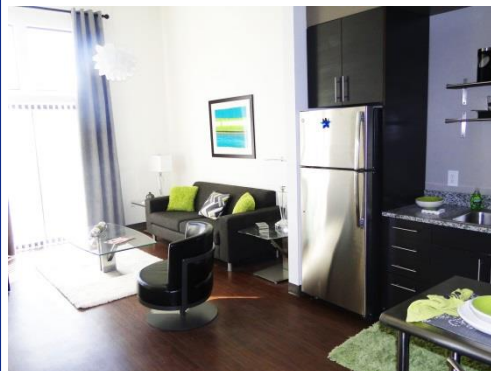
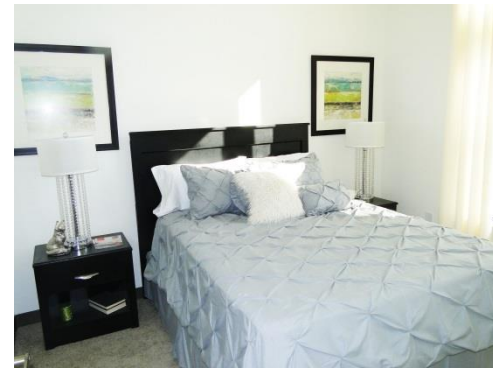
December 2013

Completion Date

February 2015

Contract Amount

\$7,213,740



Building for Generations

92 West Paces Ferry Road

Atlanta, GA



J.M. Wilkerson Construction Co., Inc. was selected to construct the 92 West Paces Apartment project located in the heart of Buckhead.

The 9-story tower offers 210 luxury apartments and 379 parking spaces with an Arriscraft Stone and Stucco Skin. The team successfully delivered the first of eight phases 13 months after breaking ground, allowing the first residents to move in while the upper floors are under construction. The project boasts 9½ft ceilings with custom cabinets, granite countertops, wood and tiled floors, stainless steel appliances and architectural trim. The parking garage has a subterranean first floor with 2½ levels above it. The Owner added a 2,000 sq. ft. roof top terrace overlooking the midtown skyline to accompany the 3rd floor clubroom, Cyber Lounge and Pool Amenity Deck, plus the 4th Floor Rock Gardens, Fire Pit and Bocce Ball Court.

Client

Preserve Properties LLC
2964 Peachtree Road, Suite 360
Atlanta, GA 30305
Michael Busboom
678.974.8803

Architect

Coursey Architects
2849 Paces Ferry Road SE, Suite 220
Atlanta, GA 30339
Gary Coursey
770.432.2727

Start Date

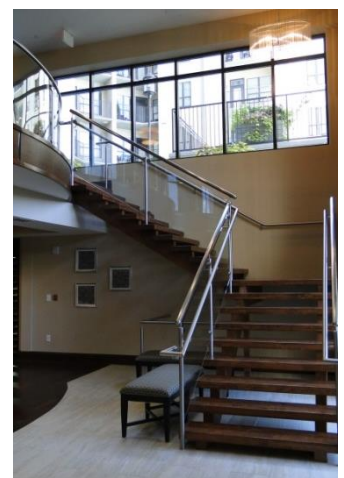
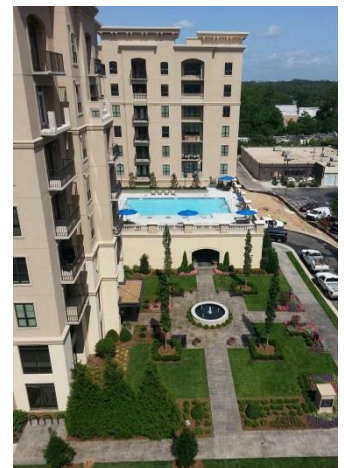
February 2012

Completion Date

August 2013

Contract Amount

\$29.9 Million - whole project



Building for Generations

Lafayette Sustainable Housing Developments

Lafayette, Georgia



J.M. Wilkerson Construction Co., Inc. was selected as the general contractor for the construction of the new Sustainable Housing development for the Lafayette Housing Authority located in Lafayette, Georgia.

The project consisted of the construction of 30 housing residential units in 15 duplex buildings on two sites. The sites are located on: (1) Foster Circle; and (2) South Steele Street near its intersection with Culberson Avenue. The project is pursuing certification under the LEED for Homes (LEED-H) program.

The duplex buildings total approximately 33,816 sq. ft. of heated space and were constructed of wood framing with cementitious siding and brick and cast stone accents. The demolition and abatement of multiple buildings located at each site was required. Unsuitable soil removal took place at each site and replaced with new structural fill. The project also consisted of parking, site concrete, landscape, hardscape pervious concrete, site grading and utilities, abatement and demolition. The teams completed the project on time and within the owners budgets.

Client

The Lafayette Housing Authority
300 Oak Street
LaFayette, GA 30728
Ruth Bass
706.638.2733

Architect/Engineer

Lord, Aeck & Sargent Architecture
1201 Peachtree Street NE
Atlanta, GA 30361
Jay Silverman
404.253.6704

Start Date

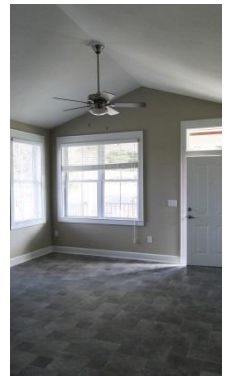
October 2012

Completion Date

August 2013

Contract Amount

\$5.7 million



Building for Generations

Multi Site Unit Upgrades - Interiors

Atlanta, GA



J.M. Wilkerson Construction Co., Inc. was selected as the contractor for the renovations to 5 of the Atlanta Housing Authorities high-rise developments in Atlanta, GA.

These senior living centers were open and active while JMW worked with-in them. Our teams completed the following scope of work:

Barge Road High-rise

Kitchen Replacements - 116 units
Interior Door Replacements - 357 units
Flooring Replacements - 58 units
Window Treatments - 30 units
Appliance Replacements - 53 units

Hightower Manor High-rise

Kitchen Replacements - 98 units
Interior Door Replacements - 0 units
Flooring Replacements - 80 units
Window Treatments - 108 units
Appliance Replacements - 95 units

Juniper & 10th Street High-rise

Kitchen Replacements - 135 units
Interior Door Replacements - 0 units
Flooring Replacements - 130 units
Window Treatments - 128 units
Appliance Replacements - 86 units

Marian Road High-rise

Kitchen Replacements - 159 units
Interior Door Replacements - 227 units
Flooring Replacements - 119 units
Window Treatments - 231 units
Appliance Replacements - 195 units

Marietta Road High-rise

Kitchen Replacements - 114 units
Interior Door Replacements - 286 units
Flooring Replacements - 106 units
Window Treatments - 101 units
Appliance Replacements - 6 units

Client

The Habitat Company
225 Peachtree Center S Tower
Atlanta, Georgia 30303
Shannon Taylor
404.845.0911

Start Date

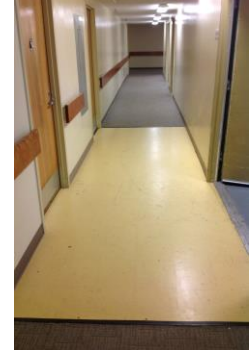
June 2012

Completion Date

May 2013

Contract Amount

\$5 Million - whole project



Building for Generations

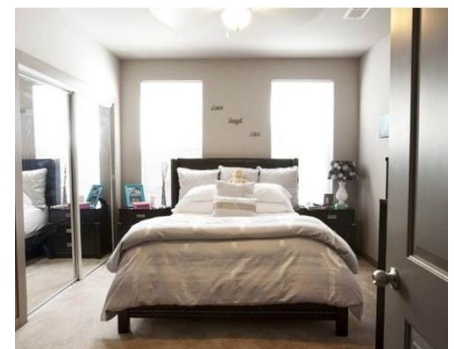
Eclipse at 805 E. Broad Street

Athens, GA



J.M Wilkerson Construction Co., Inc. was selected as the general contractor for the luxury student housing complex Eclipse at 805 E. Broad Street in Athens, GA.

This new 51,636 sq. ft. Student Housing complex offers townhomes, flats, a fitness center, study lounge and 4,469 sq. ft. of street front retail. The project consisted of site work, detention structures, site paving, landscaping and a cast-in-place podium slab/parking deck. Building structures are wood frame construction consisting of 4 and 5 story structures clad in a mixture of brick, Hardi and stucco. Roofing consisted of TPO, metal and aluminum. The 128 sleeping units were leased prior to completion of construction and the project's schedule was shortened by 4 weeks. This project was completed on-time and with-in the owners budgets.



Client

Chance Partners, LLC
Bill Newell
678.799.8960
5256 Peachtree Road, Suite 135
Atlanta, GA 30341

Architect

Pucciano & English, Inc.
Fred Pucciano
770.457.0623
3084 Mercer University Dr., Ste 110
Atlanta, GA 30341

Start Date

January 2013

Completion Date

August 2013

Contract Amount

\$6.3 Million

Building for Generations

Hotel Indigo - LEED "Gold"

Athens, GA

J.M. Wilkerson Construction Co., Inc. was the general contractor for the Hotel Indigo located in Athens, GA.

This project included the new construction of a 5 story, 93,447 sq. ft. boutique hotel. This 130 guest room hotel is the first LEED-Gold hotel for IHG and the 9th LEED-Gold hotel in the world. The project diverted over 1,532 tons of waste, used over 46% of locally produced materials, saved more than 30% of its water usage over similar projects and used over 28% of recycled content. JMW completed this complex project on time and within budget .

Client

Athens Hospitality Holding Group, LLC
Barry Rutherford
404.255.2821

Architect

Surber Barber Choate Hertlein
Jeremy Moffit
404.872.8400

Start Date

July 2008

Completion Date

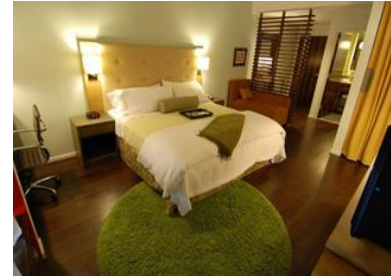
August 2009

Contract Amount

\$15.1 Million - whole project

Awards

Hotel Design 2010 winner, ULI Award of Excellence, 2010 Build Georgia 1st place, 2010 Sustainability 1st place winner, World Travel Award, Americas Leading Hotel Award, AIA awards as well



Charlottetown Terrace High-Rise - LEED "Gold"

Charlotte, NC (CM@Risk Delivery)



J.M. Wilkerson Construction Co., Inc. and Section 3 Partner, Sovereign Construction, were contracted to act as the CM at-Risk on behalf of the Charlotte Housing Authority for the renovation of their existing 125,178 sq. ft., 11 story Charlottetown Terrace facility in Charlotte, NC.

This LEED Gold project's scope of work included the total renovation of the existing 180 units down to 161 larger updated studio units and 1 bedroom unit. The project updated exterior, roof, public and social spaces located throughout the tower and ground level. This project diverted more than 81% of its waste from landfills and used more than 27% recycled and 21% regional construction materials.

Client

The Charlotte Housing Authority
1301 South Boulevard
Charlotte, NC 28209
J. Wesley Daniels, Jr.
770.336.5240

Architect

Axiom Architecture
333 W. Trade Street, Suite 200
Charlotte, NC 28202
Steve Barton, AIA LEED AP
704.927.9900

Start Date

October 2010

Completion Date

October 2011

Contract Amount

\$11.1 Million - whole project



Building for Generations

CHRIS Kids - 1st Place 2010 Earth Craft Multi-Family

Atlanta, GA



J.M. Wilkerson Construction Co., Inc. served as the general contractor for the CHRIS Kids project located in Atlanta, GA.

The scope of work for this project included the renovation of 4 apartment buildings, totaling 20,842 sq. ft., and the new construction of 1 38,045 sq. ft. apartment building. This project was funded by HUD, the Atlanta Development Authority, Georgia Department of Community Affairs, and the Atlanta Affordable Housing Program. This is an Earth Craft Multifamily project through the U.S. Department of Energy.

Owner Representative

The Paradigm Group, LLC
5 Concourse Pkwy, Suite 3000
Atlanta, GA 30328
Michael Costoulas
770.933.3157

Architect

Smith Dalia Architects
621 North Avenue, Suite C-140
Atlanta, GA 30308
Greg Cross
404.892.2443

Start Date

April 2009

Completion Date

March 2010

Contract Amount

\$4.8 Million

Awards

2010 Earth Craft Multifamily
Affordable Housing
Builder of the Year



Building for Generations

Castleberry Point Lofts

Atlanta, GA

J.M. Wilkerson Construction Co., Inc. was the general contractor for the Castleberry Point Lofts located in downtown Atlanta, GA.

This building is a 4 story, wood structure consisting of 160,945 sq. ft. of residential space, a 93,000 sq. ft. parking deck and 35,384 sq. ft. of retail space at the street level. This multi-family project has 108 residential units with amenities that include an exercise/club room and a swimming pool located on the roof of the parking deck. The courtyard space includes a water feature and is accessible from the parking deck, street and commercial areas.

This project not only included traffic control and pedestrian safety measures, typical of an urban project, but also took in to account the neighboring fire station. As a result, the requirements to keep the one way street open around the perimeter of the project required continuous coordination with the City of Atlanta's Traffic Department and fire station.

Client

Miller-Gallman Development (Previous)
Fabric Developers

Jerry Miller - 404.275.3980

401 W. Ponce de Leon Ave., STE. 104
Atlanta, GA 30030

Gallman Development Group
Bruce Gallman - 404.584.0101
236 Forsyth Street SW, STE 104
Atlanta, GA 30303

Architect

Stevens & Wilkinson Stang & Newdow
Charles Voorhees

404.522.8888

100 Peachtree Street, Suite 2500
Atlanta, GA 30303

Start Date

May 2007

Completion Date

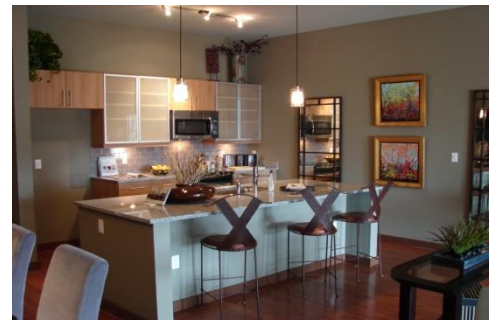
August 2008 (Completed 3 months early)

Contract Amount

\$23.8 Million

Awards

2009 First Place Build GA Award from the
Georgia Branch, AGC



Building for Generations

The Aramore - Phases I & II

Atlanta, GA

J.M. Wilkerson Construction Co., Inc. started the new construction of Phase I of the Aramore in November 2002 and Phase II in July 2003 in Atlanta, GA.

With a total of 120 condominiums, each phase consisted of six residential levels with retail space on the street level. The structure is made up of approximately 145,000 sq. ft. of cast in place concrete. The financial and scheduling aspects of the precast parking deck, that connects the two phases, were split between the two contracts. The project also included over 20,000 sq. ft. of street front retail and streetscape improvements. Both phases were finished on time and within the developer's budgets.

Client

Kairos Development
Formerly
Residential Community Investors
2233 Peachtree Road, NE
Atlanta, GA 30309
Art Roundtree
404.350.1440

Architect

Cooper Carry Architecture
3530 Piedmont Road, NE
Atlanta, GA 30305
Greg Miller
404.237.2000

Start Date

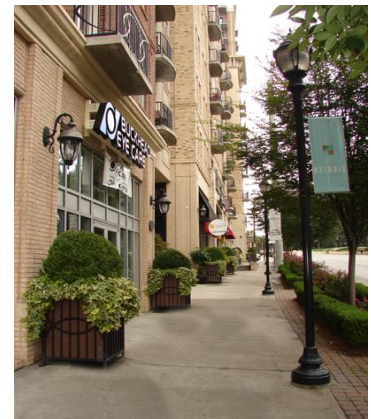
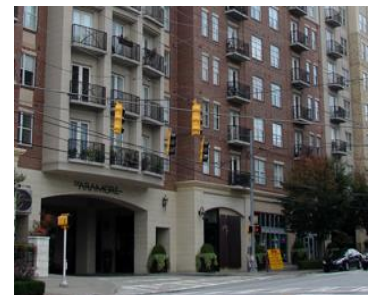
November 2002

Completion Date

July 2005

Contract Amount

\$15.2 Million



Building for Generations

J.M. Wilkerson Construction Co., Inc. was the general contractor for the Columbia Tower project located in downtown Atlanta, GA.

The scope of work for this project included doing a complete interior and exterior renovation and addition to this 12 story building. This included demolition of the existing building's interior, asbestosis removal, new roofing, interior reconstruction of the 95 apartments and structural steel additions to floors 1, 2, 3, 11 and 12 for a fitness center and amenity area. The project also included extensive additions to their administration offices and a counseling center. This interiors work was completed in addition to the unit designs.

Client

Columbia Residential
1718 Peachtree St. NW, Ste 684
Atlanta, GA 30309
Noel Kahlill
404.874.5000

Architect

Picard Associates
550 Pharr Road, Ste 340
Atlanta, GA 30305
Emile Picard
404.207.1170

Start Date

September 2006

Completion Date

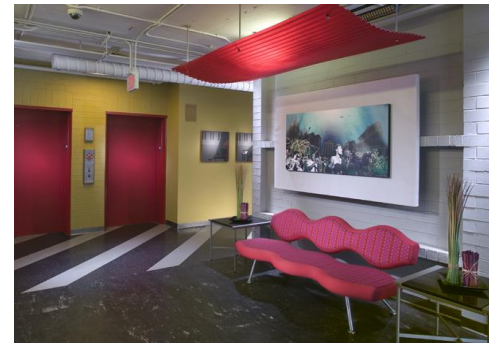
November 2007

Contract Amount

\$8.1 Million - whole project

Award

2008 Apartment Renovation Project of the Year, Multifamily Executive Awards



Historic Renovation Experience



Building for Generations

Oakland Cemetery Bell Tower Renovation

Atlanta, Georgia



J.M Wilkerson Construction Co., Inc. has been selected as the general contractor for the Historic Oakland Cemetery Bell Tower Renovation located in Atlanta, GA.

This exciting project consists of two floors, plus a basement receiving vault and tower belfry, currently totaling approximately 1,400 SF of conditioned area. The Bell Tower was originally constructed in 1899, adding porch structures and windows at a later date. The scope of work includes the renovation and repositioning of the building in order to accommodate new event space(s), increased accessibility as well as upgraded restrooms and building systems. Portions of the building will be restored to previous appearance. The basement vault will be enclosed to be used as an office. Level 1 will be rearranged to include a main event space, bathroom and flex space. Level 2 will be opened up to create a larger space for events and bathroom. The existing porches that are currently conditioned will have new openings and a new roof, and will be used as outdoor space.

Circulation will be improved with a monumental stair connecting the event spaces on Levels 1 & 2. A new elevator will be installed to provide ADA access to Levels 1 & 2.

Client

Historic Oakland Foundation
438 Memorial Drive, Atlanta, Ga 30312
Neale Nickels
404.688.2107

Architect/Engineer

Smith Dalia Architects
83 Poplar St. NW, Atlanta, GA 30303
Greg Cross
404.892.2443

Start Date

March 2022

Completion Date

November 2022

Contract Amount

\$1,743,158.00



Building for Generations

The Imperial Hotel - Restoration / Additions

Atlanta, GA



J.M. Wilkerson Construction Co., Inc. was selected as the general contractor for the interior and exterior renovation/rehab of the existing Imperial Hotel, located in downtown Atlanta, GA.

This 1910 historic hotel, listed in the National Registry, is our second major project with Columbia Residential. The building is approximately 58,780 sq. ft. with 9-Stories. This challenging urban rehabilitation included a complete interior demolition to accommodate the build-out of 90 new residential apartment units. Interior work included finishing out new amenity and public spaces, reception areas, community rooms and management offices. Renovations also included new unit layouts, plumbing, electrical, HVAC, and finishing. Exterior work included restoration of the building along with replacement of all windows, and stabilization of all façade details. This project was awarded LEED Gold certification.



Client

Columbia Residential
1718 Peachtree Street NW #684
Atlanta, GA 30309
Robert Barfield
404.874.5000

Architect

Axiom Architecture
Surber Barber Choate & Hertlein Architects
1776 Peachtree Street NW #700S
Atlanta, GA 30309
Dennis Hertlein
404.872.8400

Start Date

October 2012

Completion Date

December 2013

Contract Amount

\$10.9 Million

Awards

2014 AGC Build Georgia Awards First Place
2014 Urban Design Commission Awards Of Excellence First Place
2014 National Housing & Rehabilitation Association Awards Best Historic Renovation using Tax Credits Finalist
2014 Atlanta Regional Commission's Development of Excellence Award
2014 Edson Award for Tax Credit Excellence
2014 NALHFA Exemplary Project
2014 AIA Atlanta Honor Award for Residential Design
2014 APAB Award of Excellence
2014 Preservation's Best Award
2015 GA Trust preservation Award for Excellence in Sustainable Rehabilitation



Building for Generations

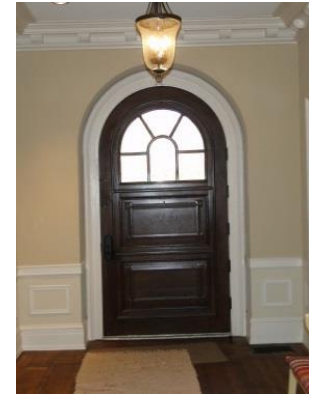
Paideia School Renovations

Atlanta, GA



J.M. Wilkerson Construction Co., Inc. constructed The Paideia School's historic red brick building in Atlanta, GA.

This 1920's historic Druid Hills mansion sits on the award winning Paideia private school campus located across from the Olmstead parks along Ponce de Leon Ave. The renovations were to accommodate new Admissions, Communications and Parent Involvement offices. Exterior work included re-cladding and window replacement at the non-historic locations, restoration of exterior masonry and limestone, rebuilding the stair on the west side, removal of exterior storm windows, painting & miscellaneous repairs. Interior work included new mechanical, electrical & plumbing systems, reconfiguration of second floor office spaces and restoration of historic finishes. Interior work also included restoration of original carved mantels, stripping paint from quarter sawn oak trim, and restoration of wood flooring.



Client

Paideia School
1509 S. Ponce De Leon Ave
Atlanta, GA 30307
Paul Bianchi, Headmaster
404.377.3491

Architect

Barbara Kovacs Black
184 Waverly Way, NE
Atlanta, GA 30307-2568
404.522.1705

Start Date

March 2013

Completion Date

August 2013

Contract Amount

\$1.4 Million

Awards

ULI Award of Excellence

Building for Generations

309 East College - 2011 Preservation Award

Decatur, GA



J.M. Wilkerson Construction Co., Inc. was selected as the general contractor to reconstruct 309 East College Ave located in Decatur, GA.

This early 1920's retail structure, that sits at one of the main access points to the City of Decatur's downtown district, suffered a major fire in late 2009, leaving the remaining structure in an unsafe condition. JMW worked directly with the owner to assist in insurance settlements and collaborated with the design team for the completion of working drawings and specifications. After sitting for over a year, our teams were able to help kick off the project's re-development. The building was rebuilt using historic details and load bearing masonry walls. Steel and wood timbers made up roof structures and custom built wood storefront window systems mimicked previous window details. This project was completed ahead of schedule, allowing long displaced tenants to begin their operations and reactivate this section of Decatur.

Client

Vision Properties
Bruce Cohen
404.373.4368

Architect

Rawlings Design LLC
Eric Rawlings
404.488.2273

Start Date

September 2010

Completion Date

January 2011

Contract Amount

\$749,000.00



Building for Generations

J.M. Wilkerson Construction Co., Inc. was selected to complete the renovation, restoration, and additions to the historic 1926 Dobbs classroom building, located on the campus of Reinhardt College in Waleska, Georgia.

This challenging project included the renovation of all interior rooms, as well as exterior windows, building elevations and the surrounding site. New additions included labs, classroom spaces, and lecture halls. New entryways were completed along with site modifications to provide better access for students and faculty. The project was completed within the six month schedule and within the college's budget. This was one of six projects that the JMW teams completed on behalf of Reinhardt College.

Client

Reinhardt College
7300 Reinhardt College Pkwy.
Waleska, GA 30183
JoEllen Wilson
770.720.5545

Architect

Reynolds Architect
315 Academy Street
Gainesville, GA 30501
Garland Reynolds
770.531.0100

Start Date

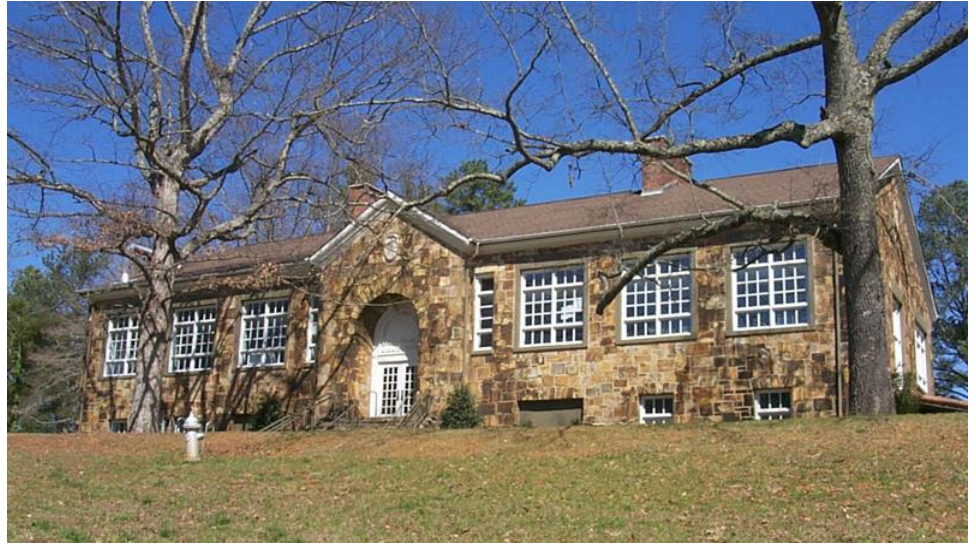
February 1993

Completion Date

August 1993

Contract Amount

\$1.1 Million



Sweet Auburn Curb Market Renovations & Restoration

Atlanta, GA



J.M. Wilkerson Construction Co., Inc. was selected as the Design / Build contractor for the renovations and restoration of the historic 1924 Sweet Auburn Curb Market, known originally as the Municipal Market of Atlanta, in Atlanta, GA.

Renovations included improvement of the base building systems, the replacement of over 160 tons of HVAC equipment, and the retrofitting of lighting throughout the entire facility. Improvements were made to electrical, plumbing, fire and security systems, as well as the renovation of all restroom facilities. Additional work to the interior included paint throughout the entire facility, as well as cleaning of all ductwork, framing and surfaces. Exterior restoration included all of the exterior façade, overhangs and brick surfaces. This work also included the removal of all non-original steel canopies, removal of paint applied to the historic brick surfaces, as well as, window and door restoration. Concrete repair work along with steel handrails and doorways were also included in the scope of work. All of this work took place while the market remained open. JMW facilitated all drawings, permitting and historic approvals.

Client

The Municipal Market Company
209 Edgewood Ave SE
Atlanta, GA 30303
Pam P. Joiner - General Manager
404.659.1665

Architect

Stevens & Wilkinson
100 Peachtree St. NE, Suite 2500
Atlanta, GA 30309
Bill Clark
404.521.6202

State Date

July 2011

Completion Date

May 2012

Contract Amount

\$1.6 Million



Building for Generations

Choosing J.M. Wilkerson Construction

J.M. Wilkerson Construction Co., Inc.
1734 Sands Place
Marietta, Georgia 30067
Office: 770.953.2659
Fax: 770.933.9665
www.jmwilkerson.com



Building for Generations

Compelling Reason To Choose J.M. Wilkerson Construction

What JMW Brings to the Table:

- Long standing history of successful construction.
- Team has years of diverse construction experience.
- Understanding of large and small projects.
- Extensive background in both Commercial and Heavy Construction.
- Sound financial and staffing history.
- JMW's team will devote partner level staff participation throughout the entire development and construction process.
- Available and talented staffing ready to participate.
- Necessary bonding, safety and construction licenses to participate.

J.M. Wilkerson Construction possess the necessary skills and expertise to provide a well coordinated, cost effective solution meeting all of the needs of this project. What we really bring to the table is a team steeped with years of construction experience. We have never failed to complete a project and commit ourselves to deliver the highest quality project possible.

At J.M. Wilkerson we pride ourselves on our communication. To communicate clearly, as well as to document those decisions, is an essential component of every successful project. Portraying our message in written and visual formats is key, but equally important are the people delivering the message. We select a team of experts at a Principal level to execute each project according to the scope of work. JMW takes care at the beginning of each project to assign a team of staff who are best qualified to deliver the best service to our client. We value our clients and allocate staff thoughtfully. The team will be in place from pre-construction until the punch-list phase. The employees of JMW have decades of experience both in the office and in the field. Our people are our biggest asset and deliver outstanding quality for the most competitive price.

Thank you for the opportunity to submit our team's qualifications, please do not hesitate to contact anyone listed with questions or additional information needed for your team's assessment of our company.

Office Address:

J.M. Wilkerson Construction Co., Inc.
1734 Sands Place
Marietta, GA 30067
Office: 770.953.2659
Fax: 770.933.9665
Web: www.jmwilkerson.com



Decatur VA Pedestrian Bridge - Decatur, GA



Renaissance Walk at Sweet Auburn -
Atlanta, GA



Braclinn Village - Peachtree City, GA

J.M. Wilkerson Construction Co., Inc.
1734 Sands Place
Marietta, Georgia 30067
Office: 770.953.2659
Fax: 770.933.9665
www.jmwilkerson.com

