

Oglethorpe Power Company

Plant Wansley, Civil Package Power Unit 8

Franklin, GA



J.M. Wilkerson Construction Co., Inc. was the contractor for site preparation and civil construction for the Oglethorpe Power Unit 8 at Plant Wansley In Franklin, GA.

JMW was responsible for the construction of boiler and stack foundations, combustion turbine/generator foundations, steam turbine/generator and condenser foundations, and the foundations for the control/administration building. The scope also included all auxiliary equipment foundations, equipment pads, pits, sumps and ground floor slabs.

Client

Oglethorpe Power Co.

Construction Manager

Siemens-Westinghouse Power Corp.

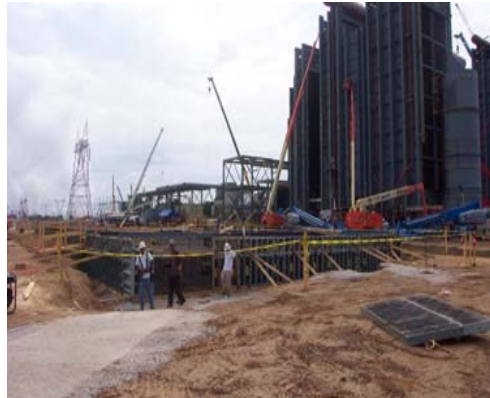
Chris Kravchuk
407.736.2480

Completion Date

May 2003

Contract Amount

\$16.2 Million



Building for Generations